

# Harris Park Community Vision Plan



Westminster, Colorado  
August 2021

# Acknowledgments

## Project Leads, City of Westminster

Nathan Lawrence, Senior Planner, Community Development  
Stephanie Troller, Business Development Manager, Economic Development

## Supporting Staff, City of Westminster

Angela Simental, Communications and Outreach Coordinator, City Manager's Office

### Community Development

Stephanie Ashmann, Senior Planner  
Debra Baskett, Senior Transportation & Mobility Planner  
Wady Burgos, Parking & Transportation Demand Management Coordinator  
Andrew Durham, Planning Intern  
Amy Johnson, Senior Planner  
Jacob Kasza, Planner  
Heath Klein, Transportation Engineer  
Sean McCartney, Senior Urban Designer  
John McConnell, Principal Planner  
Rita McConnell, Planning Manager  
Katie Schwarz, Associate Planner  
Andrew Spurgin, Principal Planner  
Josh Vaughn, Associate Planner

### Economic Development

Chase Evans, Real Estate Coordinator  
Jenni Grafton, Housing Policy & Development Manager  
John Hall, Economic Development Director

### Parks, Recreation and Libraries

Nicole Ankeney, Senior Landscape Architect  
Rich Neumann, Cultural Affairs Administrator  
Kate Skarbek, Senior Management Analyst

## Consultant Team

Noré Winter, President, Winter & Company  
Julie Husband, Director of Urban Design Studio, Winter & Company  
Marcia Boyle, Associate Planner/Designer, Winter & Company

## Harris Park Community Vision Plan Focus Group

Merrit Bachman  
Bev Capra  
Donnie Danesh  
Stephen Gay  
Karen Gay  
Linda Graybeal  
Brent Griebling  
Kim Griebling  
Itzel Hernandez  
Debbie LeCavalier  
Dan Orecchio  
Stephanie Orecchio  
Greg Pachello  
Penny Quinn  
Michael Roccaforte  
Gary Shea  
Becky Silver  
Barb Struck  
Andrew Toole  
Robin Wolff

## Growing Home

Karen Fox Elwell, President and CEO

## Community Resources and Housing Development Corporation (CRHDC)

Arturo Alvarado, Executive Director

## Westy POWER!/¡PODER! Parent Council

Daniela Sanchez, Growing Home Liaison

## TransLingua

Translation and interpretation services

*Special thanks to the residents and business owners of Harris Park for their participation in the community engagement process*



# TABLE OF CONTENTS

## Chapter 1

<b>Introduction</b> .....	<b>1</b>
Local History .....	1
Defining Boundaries .....	3
Harris Park Core Existing Conditions.....	4
Recent Planning and Programming Efforts.....	9
Policy Base.....	11
Plan Development .....	13

## Chapter 2

<b>Harris Park Core: Vision &amp; Design</b> .....	<b>15</b>
The Vision .....	16
Goals.....	18
Design Character in the Core .....	19
Character Area 1 .....	21
Character Area 2 .....	23
Character Area 3 .....	25
Character Area 4.....	27
Character Area 5 .....	29
Character Area 6 .....	31
Character Area 7 .....	33
Character Area 8.....	35
Character Area 9.....	37
Public Spaces.....	39
Illustrative Opportunity's Sketch Plan .....	42

## Chapter 3

<b>Connectivity &amp; the Public Realm</b> .....	<b>49</b>
Connectivity & Placemaking .....	51
Parking .....	56

## Chapter 4

<b>Planning for the Greater Harris Park Neighborhood</b> .....	<b>57</b>
Public Realm .....	58
Private Realm.....	59

## Chapter 5

<b>Design Principles</b> .....	<b>61</b>
Sample Design Principle Format.....	62
Streetscape .....	63
Site Design.....	65
Building Design .....	71
Parking .....	75

## Chapter 6

<b>Implementation</b> .....	<b>77</b>
-----------------------------	-----------

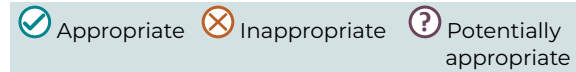
## Appendix (under separate cover)

<b>Public Outreach</b> .....	<b>A-1</b>
Workshop 1 Postcard Invitation.....	A-2
Workshop 1 Summary.....	A-3
Workshop 2 Postcard Invitation.....	A-22
Workshop 2 Summary.....	A-23
Workshop 3 Postcard Invitation.....	A-45
Workshop 3 Summary.....	A-46
Workshop 4 Summary .....	A-49

## List of Maps for Harris Park




- Map 1: Plat Map of Harris Park, 1880
- Map 2: Plan Area Boundaries
- Map 3: Recent Improvements in the Harris Park Area
- Map 4: The Harris Park Plan Area and Other Recent Planning Boundaries
- Map 5: The Character Areas of the Harris Park Core
- Map 6: Opportunities Sketch Plan
- Map 7: Plan Detail 1 – Investment Opportunities
- Map 8: Plan Detail 2 – Investment Opportunities
- Map 9: Plan Detail 3 – Investment Opportunities
- Map 10: Plan Detail 4 – Investment Opportunities
- Map 11: Connectivity Framework
- Map 12: The Greater Harris Park Neighborhood

## Image Key



*(Ratings are based on community input.)*

In this plan, symbols are used to indicate the degree of appropriateness:

-  = Indicates the image is appropriate for the noted context
-  = Indicates the image is inappropriate for the noted context
-  = Indicates certain aspects of the image may be appropriate while others are not, for the noted context. These are indicated in the caption for the picture.



# Chapter 1

## Introduction

---

The Harris Park Community Vision Plan is the culmination of a community engagement process aimed at formulating a vision for the future of the Harris Park neighborhood.

After numerous public meetings and outreach efforts, it is clear that the community has a bold vision for Harris Park. This Vision Plan reflects the community's vision for future development of private property and the enhancement and activation of key public spaces and other parts of the public realm. The Plan outlines current conditions of the study area and then uses this input to produce core goals and principles that will shape the future of the neighborhood. In addition to recommendations for specific areas and public spaces, design principles are provided to direct public and private investment in a manner that supports the vision.

**The vision, goals, and recommendations outlined in this Vision Plan will require both public and private sector actions and, as a result, it is understood that some variations**

**in this conceptual vision plan will occur. Variations may also occur based on funding, overall city priorities, and physical constraints. Nonetheless, any improvements in the area should be based upon consultation with this Plan.**

### Local History

Westminster's first settler established his farm in what is known as the Harris Park Neighborhood in 1863. Soon, others began to move into the area including Edward Bruce Bowles, who arrived in 1870. His red brick home still stands at the corner of 72nd Ave and Newton St and is now listed on the National Register of Historic Places.

In 1881, soon after the railroad arrived, a Connecticut real estate developer named C.J. Harris came to the area and began to consolidate land for re-sale to fruit farmers. Harris Park was soon covered with apple and cherry orchards, creating a green oasis on the dry plains.

By the turn of the century, the Town had been named Harris and was



*"Downtown Westminster" in 1924. The addition to Stuckey's is visible in the center. The Grange is located to the right of Stuckey's and the public library (also Sadie Anderson's millinery shop) is to the left. (Courtesy of Historic Architectural Survey: 2006-2007, prepared for the Westminster Historic Landmark Board by Deon Wolfenbarger and Three Gables Preservation)*



*Looking northwest from the railroad to the present day Bradburn Blvd and the former depot. Photo by L.C. McClure, ca. 1908 to 1910. (Courtesy of Denver Public Library Western Historic Photos, call number MCC-961.)*

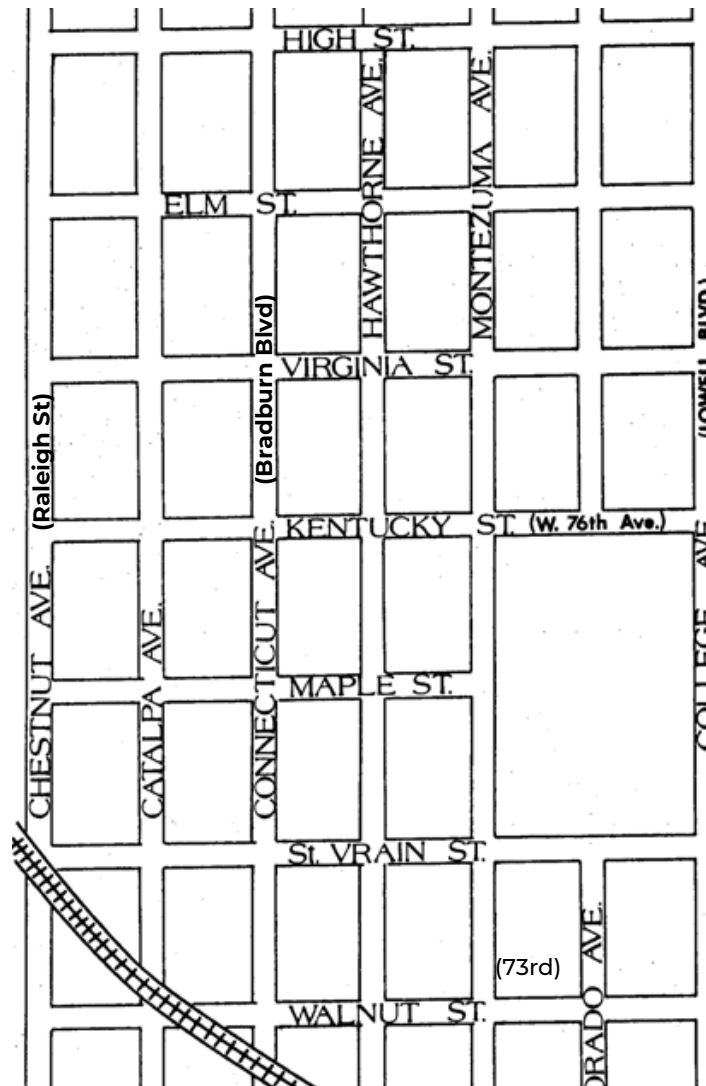


The Rodeo Super Market was the first large "supermarket" in Westminster and the last major commercial construction along W. 73rd Ave, the historic commercial center of town. It was operated by prominent local grocer Fred Valente from 1953 to the 1970s. (Courtesy of Historic Architectural Survey: 2006-2007)



Westminster University (located northeast of the plat map on the right, ca. 1893-1905). Courtesy of Denver Public Library Western History Photos, call number X-14805.

## Map #1: Plat Map of Harris Park 1880



This map from 1880 shows what are now 72nd and 73rd Avenues. The Bowles House is located just south of Wyoming St/72nd Ave along Hawthorne Ave.

commonly referred to as Harris Park. In 1911, the Town of Harris voted to incorporate as the Town of Westminster in honor of Westminster University. (Westminster University is now commonly known as "Pillar of Fire," and is located on the hill above Harris Park.) With its strong agricultural base and vast orchards, the town continued to grow.

The post World War II housing boom and construction of the Denver-Boulder Turnpike contributed to strong growth during the 1950s. In 1953, over 2,500 people called Westminster home and by 1960, the population had reached 13,850.

Today, Westminster has grown far beyond its Harris Park origins. As of 2019, the City's population was approximately 113,000. Although Westminster is now a major suburban center in the Denver area, Harris Park serves as a reminder of the city's historic origins along the railway.



## Defining Boundaries

Throughout this document, a series of terms are used to refer to part of or the entire project area. These terms are described below.

### Harris Park Core ("Core")

The Harris Park Core, often referred to as the "Core," is the primary area being addressed by this Vision Plan and is generally bounded by 72nd Ave to the South including the southern side of the street, Irving St to the east, 74th Ave to the north, and Bradburn Blvd to the west. While the Core does not take on these exact rectilinear boundaries, these generally capture the area discussed. This area is further divided into nine Character Areas and three Public Areas, which are addressed in Chapters 2 and 3.

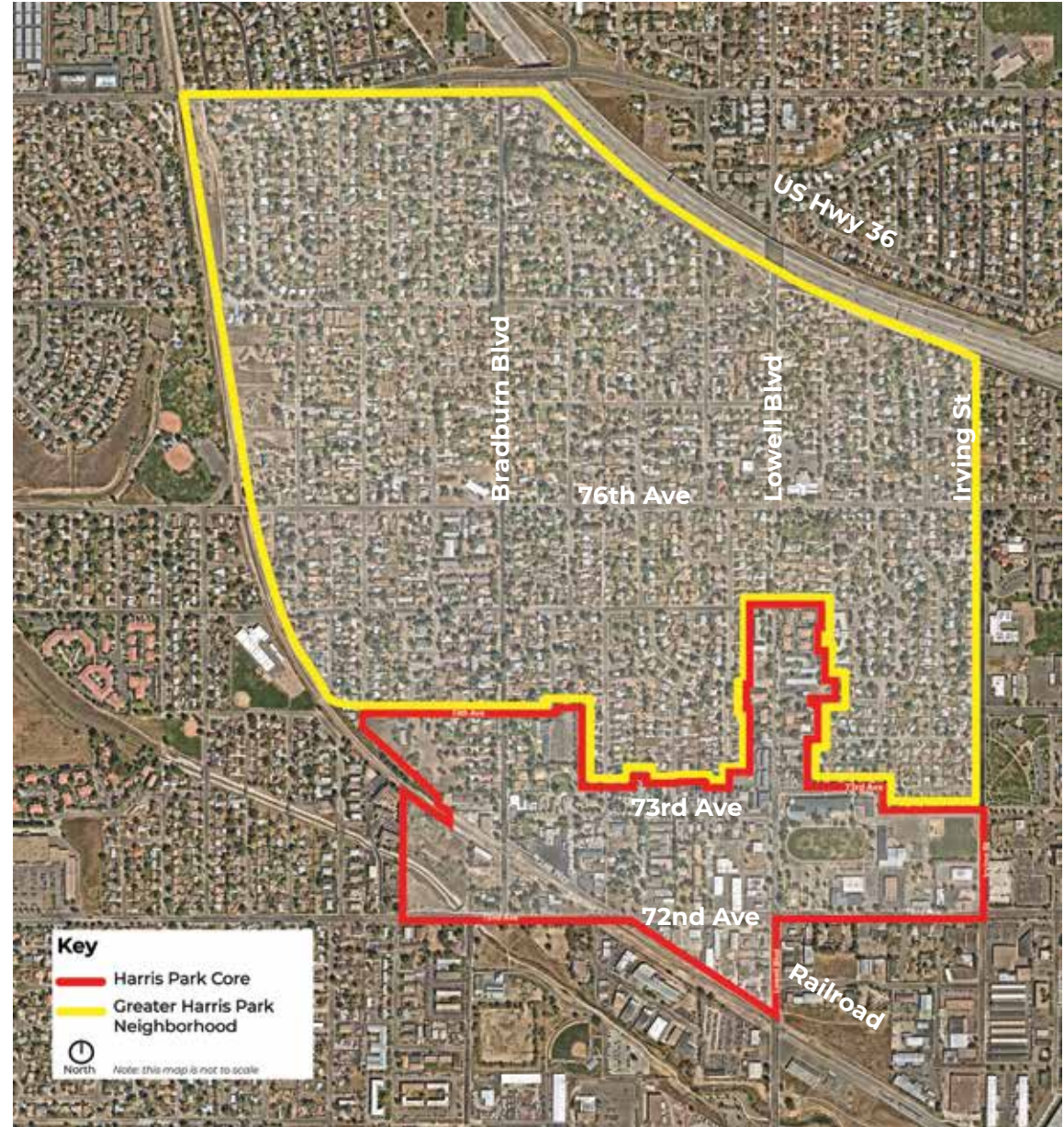
### Greater Harris Park Neighborhood ("Greater Neighborhood")

The Vision Plan also references the "Greater Harris Park Area," often referred to as the "Greater Neighborhood." This area extends north from the Core and captures primarily residential development. The Greater Neighborhood is bound by 74th Ave to the south, Irving street to the east, 80th Ave and Highway 36 to the north, and the BNSF railroad tracks to the west.

### Harris Park

Together, the Harris Park Core and the Greater Harris Park Neighborhood comprise Harris Park, sometimes referred to as "the Area."

Map #2: Plan Area Boundaries







*A walkable 73rd Ave and its historic buildings were noted by the community as key assets.*



*An adaptively reused residential building along 73rd Ave is now a law office.*



*The 73rd Ave Sculpture Park is a key Harris Park asset as identified by the community.*

## **Harris Park Core Existing Conditions**

Harris Park is home to Westminster's historic center, along 73rd Ave. The eclectic neighborhood includes buildings constructed from the 1910s and on. 73rd Ave remains an important neighborhood center, with businesses contained in one and two story buildings, some of which are adaptively reused structures.

72nd Ave is an important commercial corridor with additional commercial activities occurring along Bradburn Blvd and Lowell Blvd. A triangular area bordered by 72nd Ave to the north, Lowell Blvd to the east, and the BNSF railroad line to the south and west currently contains a variety of industrial, and some commercial uses. The railroad also bisects the southwestern portion of the Core at 72nd Ave and Bradburn Blvd, which includes a mix of residential, commercial, and light industrial uses. Though it lies south of 72nd Ave, this triangular section was added to the Core as it serves as an important transition between the Harris Park Core and the Westminster Station Area (see Map #2).



Just outside of the Core are key community landmarks and circulation infrastructure which connects to neighboring communities and the region. To the southeast is Westminster Station (including park and ride, bus, and commuter rail service) connecting to Denver's Union Station. The regional Little Dry Creek Trail/Rocky Mountain Greenway multi-use trail (part of the England Park Corridor) connects Westminster Station to the southwest corner of the Core area. Map #4 illustrates other plan boundaries in relation to this Vision Plan.

To the east of the Core is Hidden Lake High School, which borders Lowell Blvd. One block further east is the Irving Street Library. The greater Harris Park Area, which continues north of the core area, extends north to 80th Ave and Highway 36, and is primarily single family detached residential in use.

During the outreach process, the community noted many key assets, issues, and opportunities in Harris Park:

### Assets

- A walkable 73rd Ave and its historic buildings
- Existing public spaces including Fireman's Park and the 73rd Ave Sculpture Park
- A distinct character and a sense of identity
- A mix of uses
- Unique businesses and organizations including an art gallery, the history center, and community healing and meeting centers
- Limited new construction that is compatible with the area

### Issues

- Vacant underutilized properties
- Property owner maintenance issues
- Lack of services for the homeless
- Low-quality connections for pedestrians, cyclists, and vehicles to Westminster Station
- Unsafe intersections and roadways due to vehicular speed, lack of sight lines, and dangerous pedestrian crossings
- Lack of a landscaping buffer along the railroad
- Lack of bike facilities
- Loud train crossings
- Lack of restaurants along 73rd Ave and Lowell Blvd
- Code barriers to starting new businesses



*Assets identified by the community include a walkable 73rd Ave and unique businesses along the corridor.*



*Community members noted that new construction, while limited, in Harris Park has been designed to be compatible with historic resources.*



*Vacant and underutilized properties are a key issue, but also an opportunity for new development.*



Connect the sidewalk network to the Little Dry Creek Trail.



Add a landscape buffer along the railroad.



Provide a safe connection for pedestrians and bicyclists to Westminster Station.

## Opportunities

- Improve intersections of 72nd Ave at Bradburn Blvd/Lowell Blvd, and 73rd Ave at Bradburn Blvd/Lowell Blvd.
- Install gateway elements, such as signage and landscaping, at the four key intersections at 72nd Ave, 73rd Ave, Lowell Blvd, and Bradburn Blvd.
- Adaptively reuse existing buildings including 3915 W. 73rd Ave (formerly the Rodeo Market).
- Incentivize façade improvements for buildings throughout the Core.
- Enhance Lowell Blvd south of 73rd to become a safe place for pedestrians and bicyclists. Consider adding street lights, visible crosswalks, and landscaping.
- Provide a safe connection for pedestrians and bicyclists to Westminster Station.
- Add a landscape buffer along the railroad.
- Encourage the development of creative and unique businesses that are “destinations” such as breweries, a local restaurant, bed and breakfast, coffee shop, and a theater.



- Redevelopment sites at the north-west corner of 72nd Ave and Irving St
- Program existing public spaces and shared green spaces with a farmer's market or food trucks.
- Brand the Core with wayfinding signage, identifiable streetscape character, lights, and street trees. Incorporate art and murals along the Little Dry Creek Trail and England Park Corridor.
- Connect the sidewalk network to the Little Dry Creek Trail.
- Create new outdoor spaces and program them with activities such as a dog park or climbing wall.
- Add more parking to the Core and better utilize existing parking.
- Provide better access to the community gardens.
- Incorporate services for the homeless.
- Work with property owners to encourage better maintenance of private properties.
- Examine barriers within the existing building code that hinder the creation of new businesses and identify appropriate changes.



*Program existing public spaces and shared green spaces with a farmer's market or food trucks.*



*Provide better access to the community gardens.*



*Incorporate art and murals along the Little Dry Creek Trail and England Park Corridor.*



*Adaptively reuse existing buildings.*



# Map #3: Recent Improvements in the Harris Park Area (1996 thru 2019)

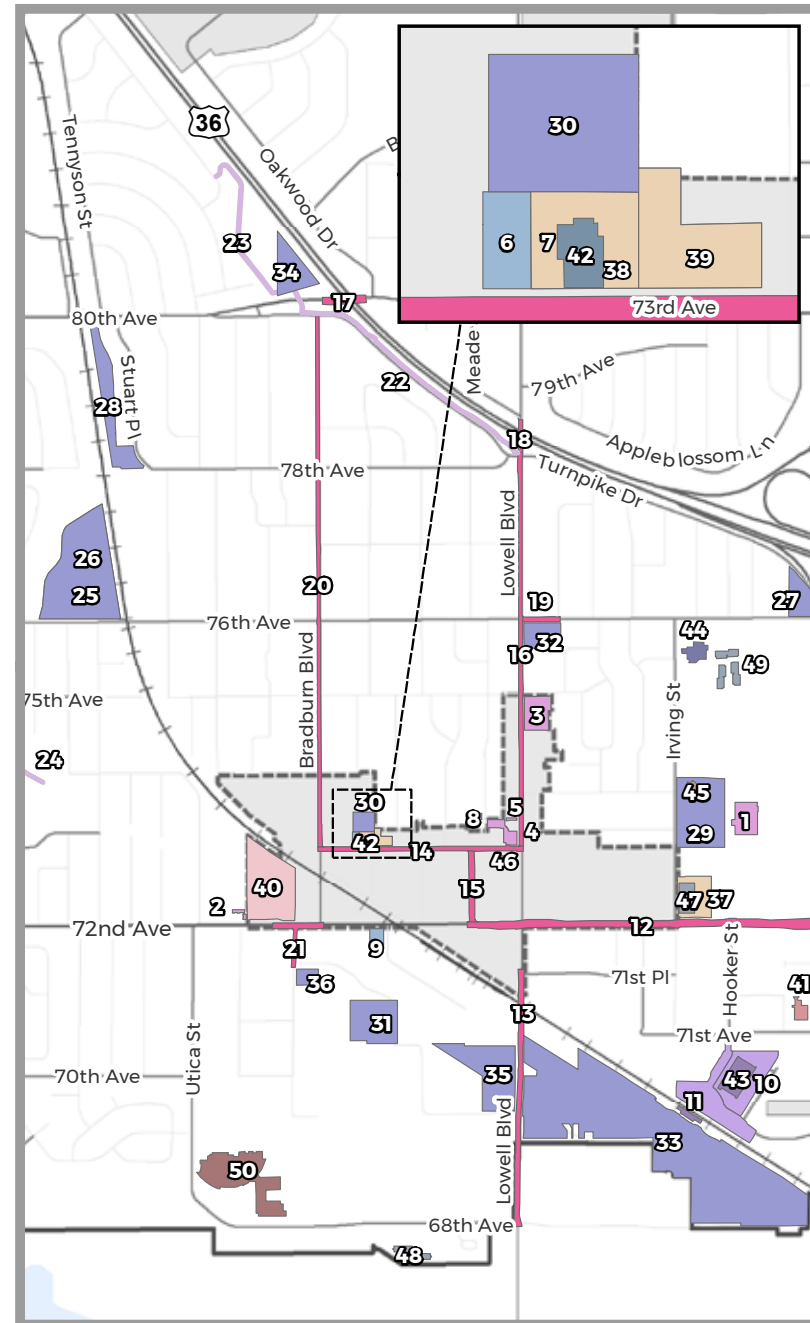
- |   |   |
|---|---|
| 1 Westminster Plaza Shopping Center                           | 26 Wolff Run Park Enhancements                        |
| 2 Orchard Court (Della Villa) Apartments Renovation           | 27 Municipal Park playground                          |
| 3 Lowell Street and Meade Street Townhomes                    | 28 Sunset Park playground                             |
| 4 Gateway Building NW Corner of Lowell Blvd and 73rd          | 29 Irving Street Park construction                    |
| 5 Lowell Row Townhomes  | 30 Park & Plaza Improvements to E & N of Rodeo Market |
| 6 Grange Hall Exterior Restoration                            | 31 England Park Ballfield Renovations                 |
| 7 Rodeo Market Restoration                                    | 32 Torii Square Park Recon. and Sculpture             |
| 8 Merton Williams House Restoration                           | 33 Little Dry Creek Park (Inc. in WM Station Cost)    |
| 9 Bowles House Museum Exterior Renovations                    | 34 Westminster Hills Park Playground                  |
| 10 Land acquisition for parking structure and station plaza   | 35 Little Dry Creek Dog Park                          |
| 11 Const. of WM Station Dr, Hooker St, & N Plaza              | 36 England Park Greenhouse                            |
| 12 Federal Blvd & 72nd Reconstruction & Streetscape           | 37 MAC Parking Reconstruction                         |
| 13 Lowell Blvd Reconstruction                                 | 38 Rodeo Market Com Arts Center and Sculpture Park    |
| 14 73rd Ave Reconstruction and Streetscape                    | 39 73rd Avenue Sculpture Park                         |
| 15 Meade Street Streetscape                                   | 40 Della Villa Park Land Acquisition                  |
| 16 Lowell Blvd Reconstruction and Streetscape                 | 41 Westminster High School Reconstruction             |
| 17 US 36/80th Ave overpass replacement and Des. Enhancements. | 42 Rodeo Market Building Acquisition                  |
| 18 US 36/Lowell Blvd Bridge Replacement                       | 43 WM Station Parking Structure. & Buss Transf. Fac.  |
| 19 76th Ave Streetscape by Torii Square Park                  | 44 Swim and Fitness Center Renovations                |
| 20 Bradburn Blvd Streetscape                                  | 45 Irving Street Library                              |
| 21 72nd Ave/Raleigh Bridge Construction                       | 46 73rd Ave/Lowell Blvd Theatre                       |
| 22 Bradburn Blvd bike/sidewalk conn. to US36 bikeway          | 47 Mature Adult Center (MAC)                          |
| 23 Lowell Blvd bike/sidewalk (with streetscape)               | 48 East Bay Senior Housing                            |
| 24 Little Dry Creek trail reconstruction                      | 49 Westminster Commons Renovations                    |
| 25 Wolff Run Park Enhancements                                | 50 Westminster High School Reconstruction             |

## Buildings with Improvements

- Cultural Improvements
- Educational
- Historic Preservation
- Park Improvements
- Senior Facilities
- Westminster Station Area

## Areas with Improvements

- Bike/Trail Facilities
- Cultural Improvements
- Educational
- Historic Preservation
- Park Improvements
- Park and Open Space Aquisitions
- Private Redevelopment Projects
- Street, Utility, and Streetscape Projects
- Westminster Station Area
- City Limits
- Core Area Boundary



## Recent Planning and Programming Efforts

As the historical center and heart of the City of Westminster, Harris Park has a rich history and significance. To recognize its importance to the City, a series of recent events and projects have been hosted and completed, leading to the development of this Vision Plan.

### Historic Westminster Branding

The multi-phased branding and marketing efforts included research, focus groups meetings, surveys, outreach, and follow-up with community residents and businesses. The intent of the work is to develop a recognizable brand and image of the area to support existing businesses while attracting additional interest and private investment.

### Historic Westminster Improvements

Map #3 illustrates numerous physical improvements that have been made in Historic Westminster in recent years. These include streetscape, utility, trail, and intersection improvements.

### Events

"Imagine Westminster" was first held June 1-3, 2018 and provided an opportunity for residents to envision revitalization of the city's historic center.

This community-led, city-supported event celebrated the arts and culture of Historic Westminster. The event began with a Friday evening Summer Block Party and movie, and continued through Sunday afternoon with local bands, refreshments, and an arts fest. The event, rebranded as the "Historic Westminster Summer Fest," was held again June 7-8, 2019.

### Westminster Forward

Begun in 2018, Westminster Forward is a city-wide coordination of long-term plans, outreach, and projects that will help frame the future of Westminster. The initiative includes these planning efforts:

- Comprehensive Plan Update
- Parks, Recreation, and Libraries Plan
- Transportation and Mobility Plan
- Sustainability Plan
- Water Supply Plan
- Unified Development Code ("Code Forward")

This Vision Plan will inform the update to the Comprehensive Plan and the zoning standards contained within the Unified Development Code.

### Design Framework Plan for the Harris Park Neighborhood (2007)

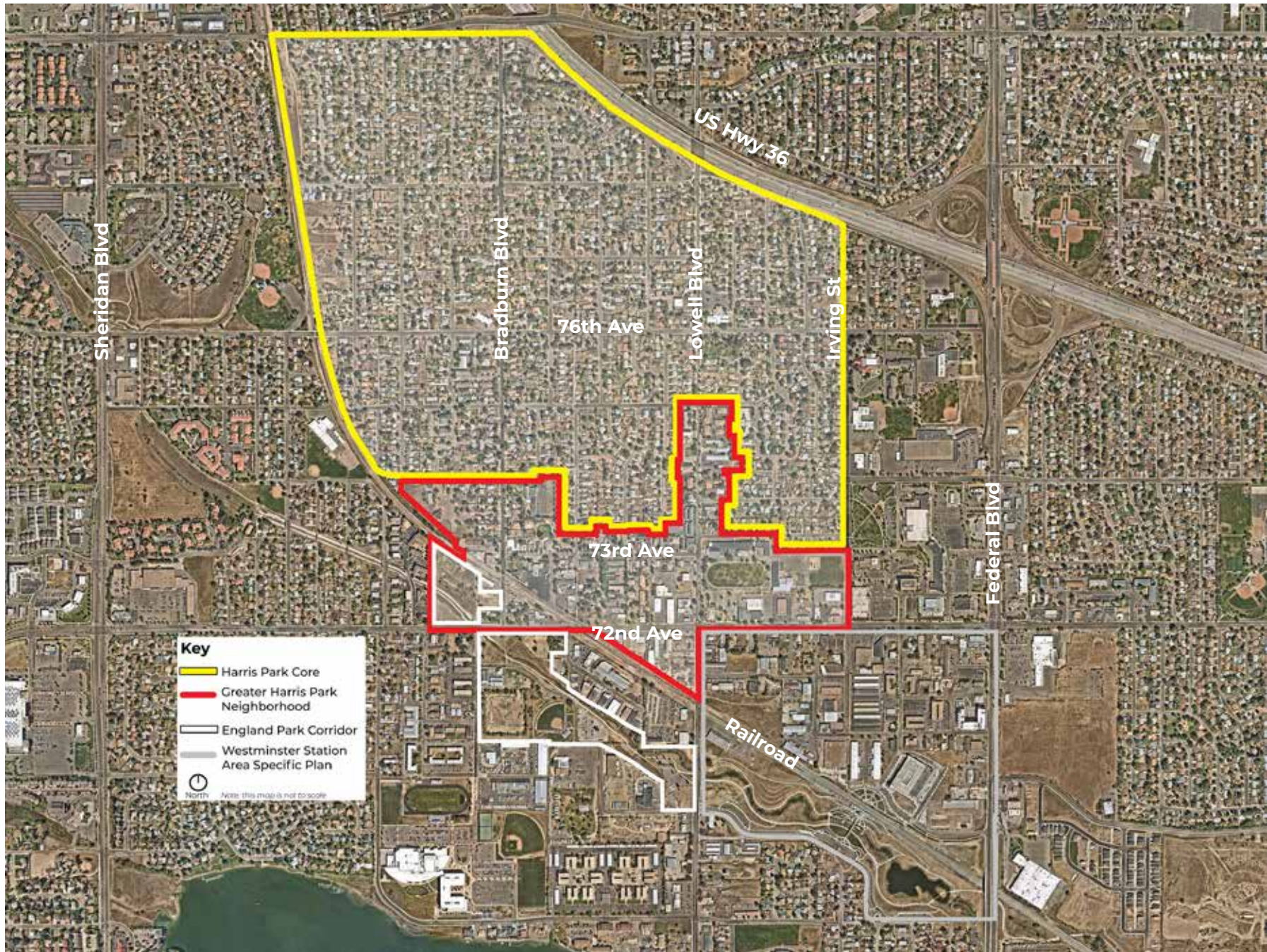
In 2007, a design framework plan for Harris Park was developed, which included information regarding the history of the area, existing conditions, and design recommendations for maintaining the neighborhood's character. The current Community Vision Plan is built upon this work but incorporates new input received during the community engagement processes.



*Members of the community discussed upcoming planning projects that would impact Harris Park with staff at Imagine Westminster in 2018.*



Map #4: The Harris Park Plan Area and Other Recent Planning Boundaries





## Policy Base

### 2013 Comprehensive Plan

The 2013 Comprehensive Plan designates the Harris Park Core as suitable for Traditional Mixed Use Neighborhood Development (TMUND). This land use designation is intended to foster neighborhoods with a variety of single-family and multi-family housing types mixed with commercial uses to create a walkable urban village. The Harris Park Community Vision Plan provides guidance in implementing TMUND in the Harris Park Core using the design principles listed in Chapter 5.

### Comprehensive Plan Update

The ongoing update will outline the vision to establish a framework for land development and redevelopment. It will align land uses with economic vitality, community health, community resilience, energy/climate, water resources, and other issues.

### Unified Development Code

The Unified Development Code (UDC) will combine the City's various land development regulations, standards, and guidelines into a single document. It is anticipated that the code will include design tools that support the mixed-use character of Harris Park.

### Westminster Station Area Specific Plan

This Plan, adopted in 2017, provides a vision and framework to guide land use, infrastructure, and redevelopment decisions for the area surrounding Westminster Station, which borders Harris Park.

### Affordable and Workforce Housing Strategic Plan

This strategic plan was received by the Westminster City Council in 2017 and sets policy focused on removing barriers to the development of new affordable housing, as well as preserving the existing affordable housing supply. It was updated in 2020 to reflect current demographics supported by a citywide Housing Needs Assessment and takes a balanced approach to housing that is inclusive and meets the diverse needs of the community.



*According to the Westminster Station Area Specific Plan, a mix of residential and commercial uses at a neighborhood scale is appropriate on the southeast corner of 72nd Ave and Lowell Blvd, which borders Character Areas 5 and 7.*



*An example of appropriate development for the Westminster Station Area, which borders the Core study area to the south. (From the Westminster Station Area Specific Plan)*



*Proposed England Corridor Master Plan Vision*

### **England Corridor Master Plan**

Developed in 2017, this plan highlights a series of physical improvements along the Little Dry Creek Corridor to the south of the Harris Park Core. These include accessible connections, expanding the Westminster Garden, building a new playground, enhancing the Fire Training Tower, and highlighting the historic Bowles House.

The England Corridor Master Plan area overlaps with the Harris Park core on the western edge at Bradburn Blvd and 72nd Ave. The proposed vision from the Master Plan, which focuses on Westminster Garden, is shown to the left. The community's vision from the Harris Park outreach process builds on the Master Plan's vision.

## Plan Development

The Harris Park Community Vision Plan process included numerous opportunities for the public to provide input. A timeline below illustrates the public meetings hosted to collect input from the community.

Public outreach consisted of a series of Focus Group meetings and community workshops. The Focus Group was comprised of community stakeholders, who provided general guidance on the direction of the Plan and helped vet the content of each community workshop.

The first focus group meeting gathered property owners, business owners, residents, and non-profit leaders. They reviewed initial materials and information prior to their distribution at the first community workshop. Over 100 people attended to learn about the project and participate in a series of hands-on activities - which included

using stickers to mark key features, cutting and pasting building footprints, and selecting photos of new development that was appropriate for the Core.

Following the first community workshop, an online survey was conducted to provide an opportunity for other community members to participate. The survey question prompted participants to envision Harris Park in 15 years and to write what types of experiences and destinations would be a part of the area.

A second Focus Group meeting provided an opportunity to review community input at the first workshop and to begin crafting a series of community vision statements.

After a brief review of Plan progress, the second public workshop began by asking participants to edit the draft vision statements. Community members also selected images of development that they thought were appropriate for each of the



*Focus Group members discussed the boundaries for the Plan areas at the January 2019 meeting.*



*Workshop 1 attendees study a subarea map and place appropriate building footprints.*

### Harris Park Community Vision Plan: Project Timeline

Focus Group Meeting 1	Workshop 1 & Survey	Focus Group Meeting 2	Workshop 2	Plan Outline	Plan Draft 1	Workshop 3	Staff Review Draft Plan	Public Review Draft	Focus Group Meeting 3	Virtual Workshop 4	Final Plan Draft	Public Hearings/ Accepted
Jan. 2019	Feb. 2019	May 2019	June 2019	Aug. 2019	Oct. 2019	Nov. 2019	Dec. 2019	Mar. 2020	Feb. 2021	April 2021	July 2021	Fall 2021





This WordCloud illustrates responses collected during the first workshop and the online survey regarding the future of Harris Park in 15 years.



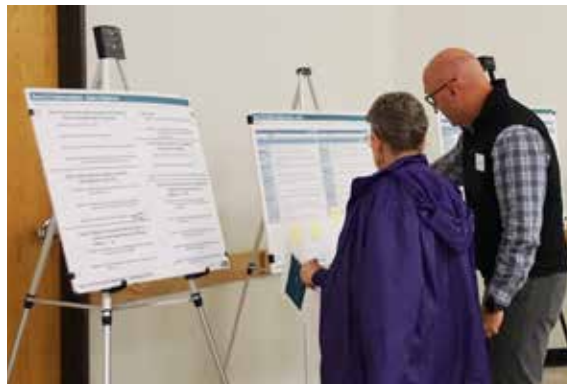
The Focus Group listens to a recap of community input from Workshop 1.



Workshop 2 participants discuss the Greater Harris Park Neighborhood.



Workshop 3 participants review Draft Plan content displayed on a series of open house boards.



Workshop 3 participants review Draft Plan content displayed on a series of open house boards.

nine character areas and three public spaces. A third activity asked participants to identify areas that were in need of infrastructure improvements and connections, and a final activity identified issues in the Greater Harris Park Neighborhood.

Following the second workshop, plan content related to the character areas, public spaces, and plan implementation was developed.

In a third workshop, after a short presentation, community members were invited to review a series of boards that highlighted the key components of the draft plan. Attendees also participated in an activity to prioritize draft implementation goals and objectives.

Public comment collected during the third workshop was considered in the creation of the first draft plan, which was then edited per staff comments for the Public Review Draft. This draft was available online for public review and comment. This fourth workshop was an online engagement that included survey questions about the plan content. Comments collected during this review period informed edits that were incorporated into the Final Plan.

# Chapter 2

## Harris Park Core: Vision & Design

---

Harris Park is valued for its walkable streets, diverse architecture, wide range of housing options, community-serving businesses, and rich heritage. Throughout the public outreach process, the community voiced a strong desire to ensure that the character of the Core remains reflective of its history, while allowing opportunities for unique infill development to accommodate new and changing uses.

This chapter presents the community's vision for Harris Park looking ahead to the future. It also outlines the unique character the community hopes to preserve as well as the key features that should be built upon moving forward.

The vision will be achieved through a series of five main goals, which are described in this chapter. These goals appear in the implementation chapter (Chapter 6), where additional information is provided.

The community's vision is further expressed through each of the Character Areas, which are presented in this chapter. Community members

studied the nine Character Areas and developed a vision for each which addresses future use, development characteristics, and streetscape features. Three public areas were also considered and the community identified a future vision for each. The recommendations included for each of these topics are reflected in the goals, objectives, and actions in the implementation chapter.

Finally, the community's vision is captured through an illustrative sketch plan and bird's-eye view. The illustrative plan shows the location of some potential infill development in relation to existing development. The bird's-eye diagram focuses on a small part of the Core in three-dimensions in order to show important development characteristics. **It is important to note that the illustrative sketch plan and bird's eye view depict one way in which new development may occur. In no way are these graphics binding for property owners, business owners, and developers. Instead, they are intended to provide ideas so that they may see how their plan for future development fits in with the community's vision.**



*Community members at Workshop 1 outlining the first stages of a vision for Harris Park and for specific Character Areas.*

**Note about photos used in the Harris Park Neighborhood Vision Plan:** Some photographs that appear in this plan are from other locations; the intent is to illustrate the character of potential improvements that could occur in Harris Park. These images were selected by community participants in public workshops; at that time, they indicated if an image would be appropriate or inappropriate in a particular setting. Sometimes, comments were added, indicating certain conditions under which an image could be appropriate. Also note that some images are repeated in the document, particularly in the discussions of the visions for individual Character Areas. This is because the same images were selected by workshop participants for more than one location.

## The Vision

A “vision” is a general description of what the community desires for the future of the area. It builds upon the strengths of the area while also addressing known issues. The following statement was crafted through multiple public meetings and rounds of revisions, and represents the community’s vision for Harris Park:

*“Harris Park is a thriving diverse community that welcomes people with a unique mix of housing, historic buildings, restaurants, shops, and small businesses. The community is connected by a variety of transportation methods, is artistic, lively, eclectic, and activated by a myriad of events that celebrate the culture and heritage of the area, inviting Harris Park residents and visitors to stay, play, and return.”*

### The Big Picture

Harris Park is:

- Walkable and bikeable
- Artistic and vibrant
- Architecturally, culturally, and economically diverse

### Character

Harris Park is a place where:

- The heritage of Westminster can be experienced.
- Residents live in a unique and creative village.
- Community events occur.
- Residents and visitors from metro Denver come to visit.

### Key Features

Harris Park is a place that includes:

- A diverse and inclusive range of appropriately scaled infill housing in attractive and compatible buildings
- Art galleries and creative institutions
- Small businesses
- Unique stores, restaurants, and services, especially along 73rd Ave
- Small parks and plazas
- Bicycle and pedestrian connections between commercial and residential areas, as well as the Westminster Station and Little Dry Creek Trail



**Draft Vision Statements**

1. The Harris Park Area is a welcoming community for all people and maintains the integrity of its historic resources while creating a walkable downtown with a mix of uses that make it a destination for residents and visitors alike to experience a delight for the senses that create the neighborhood.

*NEIGHBORHOOD*  
*SPRING ALL RESIDENTS - NOT DESTINATION*

2. The Harris Park Area includes a variety of restaurants, retail shops and other unique small businesses that make it an artistic and funky destination in the Denver Metro area, all the while maintaining the integrity of the historic, walkable and bikable community that creates a unique experience and welcomes all visitors and residents.

*ADD TO #1*

3. The Harris Park Area is a thriving community that welcomes people to a unique mix of historic buildings, restaurants, shops, and small businesses. The community is connected by multi-modal transit, is artistic, lively, funky and filled with a myriad of events that celebrate the culture and heritage of the area, inviting those that live in the Harris Park area and for those that are visiting to stay, play and return.

workshop and online survey is provided on the back of this sheet.

→ 1. They like  
 - concise Safety, walkable areas, need to focus on handicapped  
 #2 positive  
 - Small business, Arside down on would be attractive, need to have more accessible parking, Highlands is a good mixed on the funky -> more artistic and unique, more Profess  
 #3 positive culture

Need more workspace  
 Family-friendly, entertainment venue or something that will attract people from outside the community  
 Negative having more multi-family and cleanliness  
 NEED TO ADD TO STATEMENT CLEANLINESS

Harris Park Area Plan Workshop 2 • June 26, 2019

WESTMINSTER COLORADO

**Draft Vision Statements**

1. The Harris Park Area is a welcoming community for all people and maintains the integrity of its historic resources while creating a walkable downtown with a mix of uses that make it a destination for residents and visitors alike to experience a delight for the senses that create the neighborhood.

2. The Harris Park Area includes a variety of restaurants, retail shops and other unique small businesses that make it an artistic and funky destination in the Denver Metro area, all the while maintaining the integrity of the historic, walkable and bikable community that creates a unique experience and welcomes all visitors and residents.

*Parks*

3. The Harris Park Area is a thriving community that welcomes people to a unique mix of historic buildings, restaurants, shops, and small businesses. The community is connected by multi-modal transit, is artistic, lively, funky and filled with a myriad of events that celebrate the culture and heritage of the area, inviting those that live in the Harris Park area and for those that are visiting to stay, play and return.

*26 hours built on 1719*  
*Yvette likes 3*

Results from the second workshop illustrate the community's process editing draft statements to determine the final vision statement for the Harris Park Core.

## Key Features, cont'd:

- Restored historic buildings and adaptively reused buildings
- Public parking areas
- Places for community services and activities
- Housing that is affordable for a wide range of incomes

## Goals

The five goals below illustrate the key ideas outlined by the community that will work toward the vision for Harris Park. These goals are also stated in the implementation chapter (Chapter 6), and will guide activity and investment for the foreseeable future.

### 1. Preserve the unique character of the Harris Park Core and Greater Harris Park Neighborhood.

The unique character of Harris Park attracts residents and visitors, and should be maintained. This character includes historic resources, restaurants, small-scale residential development, adaptively reused structures, and occasional views to the mountains. Future development should maintain, emphasize, and build on these unique features.

### 2. Encourage new, context-sensitive redevelopment and infill.

New infill development should be context sensitive and compatible

with the unique character of Harris Park. Buildings should respect traditional form, scale and materials of the setting while expressing creativity. This includes historic commercial and residential buildings. New development should also consider the provision and location of parking, without focusing new development on surface parking. Future development must also maintain a wide range of housing types, including senior housing, and prices to ensure Harris Park remains a community that welcomes all people.

### 3. Enhance the public realm to foster a unique, local experience that attracts visitors.

Create and maintain a public realm that reflects the unique character of Harris Park, draws people into the area, and helps create a unique, memorable experience. Gateway locations should be designed to highlight key destinations and welcome people to Harris Park.

### 4. Improve walkability, connectivity and safety for transportation networks.

Establish safe networks for all forms of transportation to create an inviting Harris Park. Physical connections should be improved and extended within Harris Park and to neighboring destinations to more efficiently connect people throughout the area. Add street lighting to trans-

portation networks to bolster safety. The existing streetscape should be enhanced to encourage walking and biking.

### 5. Enhance opportunities for neighborhood communication, partnerships, and gathering.

Create gathering spaces for small-scale activities and for large, annual festivals. Provide facilities that cater to a variety of community services in Harris Park. In addition to physical spaces, strong partnerships between neighborhood groups, non-profit organizations, public entities, local businesses, and other local groups is critical to sustaining a strong community that welcomes all.

These five overarching goals seek to balance a range of topics including economic development, sustainability, design, livability, and community services. In order to achieve the vision, the community will need to take ownership of the plan vision and partner with the City to achieve these goals. These goals are inherently tied to the physical development in Harris Park, which will shape resident and visitor experiences for years to come. The following sections of this chapter present design concepts for each part of the Harris Park Core, as envisioned by the community.

## Design Character in the Core

This community vision plan divides the Harris Park Core into nine distinct Character Areas and three distinct public areas. The Character Areas address the built environment, while the public areas identify key outdoor spaces. Each Character Area is defined by existing building types and development characteristics, as well as the community's vision for future development.

General boundaries for the Character Areas were initially drawn using a series of informative documents including the 2007 Draft Design Framework Plan for the Harris Park Neighborhood, results from the 2018 Comprehensive Plan online Visual Preference Survey, the original Harris Park Plat, and existing zoning.

Discussion during the first Focus Group meeting held in January 2019 led to the development of a refined boundary map, which identified three distinct subareas. Workshop 1 participants used these three subareas in a series of activities regarding appropriate future development. Feedback collected from the workshop regarding building placement, footprint sizes, type of uses, and building revealed that a more nuanced approach was

necessary, thus the three subareas were divided into ten Character Areas. Based on field study and community input, an existing conditions description was drafted for each Character Area followed by an outline of the use, development character, and public realm elements critical to the realization of the future community vision for each. These were reviewed and confirmed at the second Focus Group meeting in May.

For the second workshop, the three key public spaces identified by the community were separated from the Character Areas. This process eliminated one of the original ten Character Areas bringing the final total down to nine.

The sections that follow include a boundary map for each Character Area, a short description of its existing conditions, and the community's vision for its future. Images included for each of the Character Areas were those selected most frequently in the second workshop. Each includes a symbol to indicate its appropriateness as directed by the community. See page ii for more of an explanation of these symbols.

### Image Key

✔ Appropriate   ✘ Inappropriate   ? Potentially appropriate

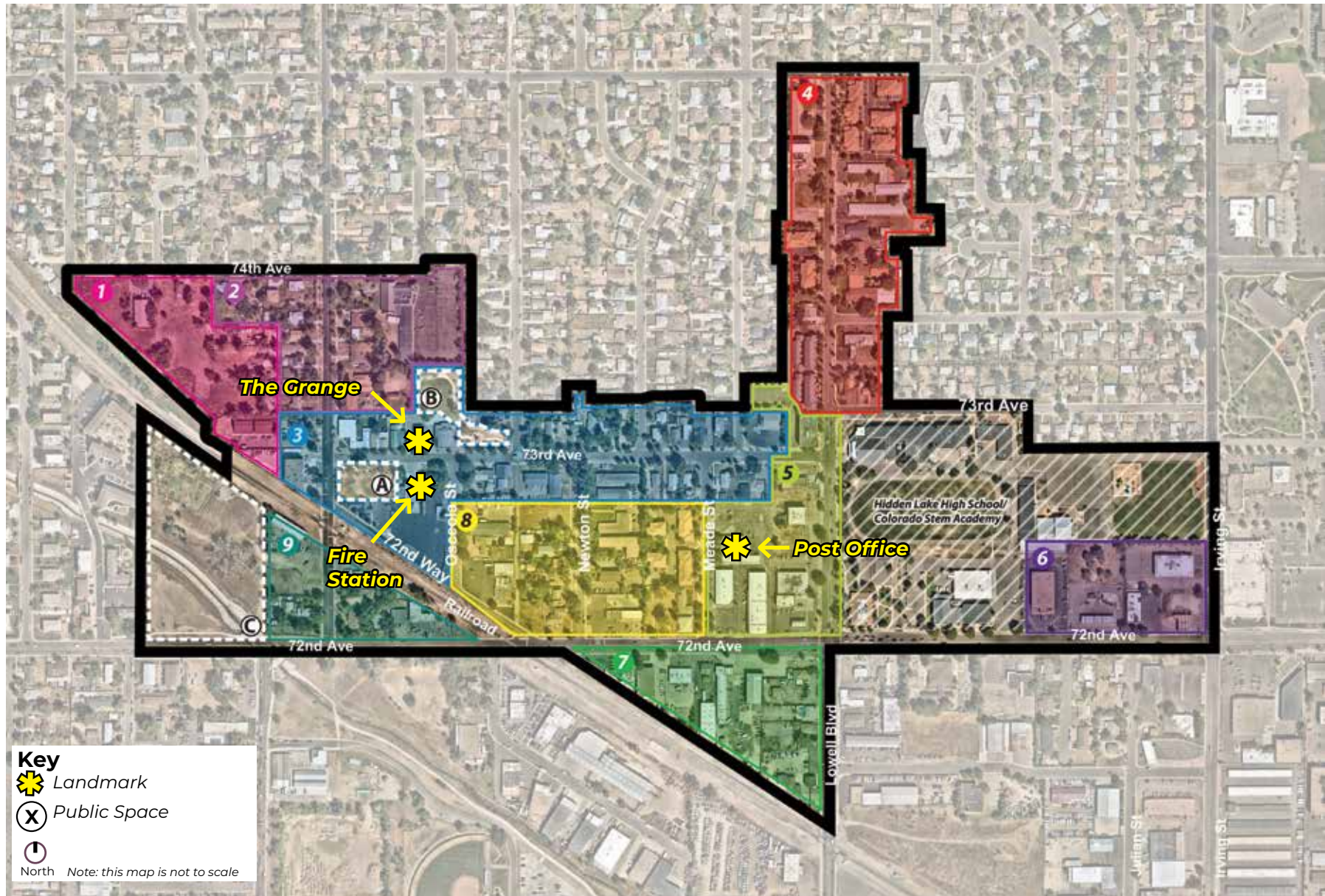
(Ratings are based on community input.)



The three subareas that community members studied and provided comment on through a series of activities in Workshop 1 were later divided into nine Character Areas.



## Map #5: The Character Area of the Harris Park Core



Harris Park consists of nine Character Areas and three public areas, all shown in the map above. Each of these Character Areas is discussed in the pages that follow.



# Character Area 1

## Existing Conditions

The area is in the northwest corner of the project boundary. On the north side, it is bounded by 74th Ave; on the east side, the boundary jogs between property lines until meeting the train tracks, which composes the western and southern boundary.

Currently, Character Area 1 is primarily privately-owned undeveloped land. A few residential structures (single-family and multi-family) exist, as well as a landscape buffer along the train tracks.

## Community Vision

Character Area 1 acts as a transition from the railroad to residential development by utilizing green space, both natural and programmed, as well as incorporating some residential infill development.

## Use

- A mix of green space and moderate residential infill development
- Green space includes a landscape buffer along the railroad, as well as a community garden located more centrally to the Character Area.
- Residential development should be oriented toward shared green space.



*While the scale of this structure may be too large, this traditional gable-roofed form with a front porch is appropriate.*

## Image Key

- ✓ Appropriate    ✗ Inappropriate    ? Potentially appropriate

*(Ratings are based on community input.)*



*The traditional form of this single-family house is appropriate, but the scale may be too large.*



*The "artistic" quality of this building is appropriate, but the scale may be too large.*



*While the single-family use is appropriate for Character Area 1, flat roofs and a full second story are discouraged.*



*Small-scale, single-family homes that are oriented toward a shared green space are appropriate.*

### *Development Character*

- Traditional residential forms, which include gable roofs and front porches
- One and two-story buildings
- Accessory Dwelling Units (ADU), tiny homes, and cluster homes
- A range of materials, including wood
- Attached single-family and duplexes, if they are designed to incorporate traditional single-family features
- "Eclectic" and "artsy" materials or colors used as accents

### *Streetscape and the Public Realm*

- Provide a green space.
- Link to neighborhood sidewalk and bike network.
- Promote establishing a quiet zone and development of silent crossings.
- Consider the use of green space along the railroad edge as a buffer.



## Character Area 2

### Existing Conditions

The area sits directly east of Character Area 1, with 74th Ave as its northern boundary. The boundary extends south to capture the church parking lot, and the residential properties on either side of Bradburn Blvd. It then turns north and follows the Character Area 1 boundary.

Character Area 2 consists mostly of small-scale single-family residential development, with the exception of the Westminster Presbyterian Church and its parking lot.

### Community Vision

Character Area 2 can accommodate "soft infill" development closer to the 73rd Ave commercial corridor. "Soft infill" refers to buildings that are added to a site that are compatible in scale, but increase the density. This may include an Accessory Dwelling Unit (ADU), such as a unit over a garage, or tiny home added to a lot with an existing single-family building. This Character Area remains one of single-lot developments, with some adaptive reuse projects and residential infill behind street-front commercial development. The church continues to function as an important community asset, and accommodates new community events.



*This scale building with a landscaped front setback is appropriate in Character Area 2.*



*The landscaping and traditional building features shown in this image are both appropriate for Character Area 2.*

### Image Key

- ✔ Appropriate
- ✘ Inappropriate
- ? Potentially appropriate

*(Ratings are based on community input.)*



*Adaptive reuse of a residential structure to an office space, maintaining the original features of the structure*



*A house adapted to commercial use in front of a new residential building to the rear is desirable for Character Area 2, but participants noted the lack of a landscaped setback.*



*The small-scale and landscaped setback make this appropriate for Character Area 2.*

### Use

- Primarily single-family residential in use, with some adaptive reuse and small-scale office commercial uses
- Public shared spaces host community events.
- Church parking lot supports community events. If development occurs on the parking lot, it should be compatible with the context and connect to existing public open space.

### Development Character

- Scale should be compatible with existing development.
- Two-story buildings and/or building components, if set back from the street
- Gable roof forms
- Wood as a primary material
- Adaptive reuse projects should complement the historic character of existing homes.
- Buildings should be slightly set back from the street and include landscaping.

### Streetscape and Public Realm

- Maintain the existing sidewalk network.
- Enhance landscape setbacks.

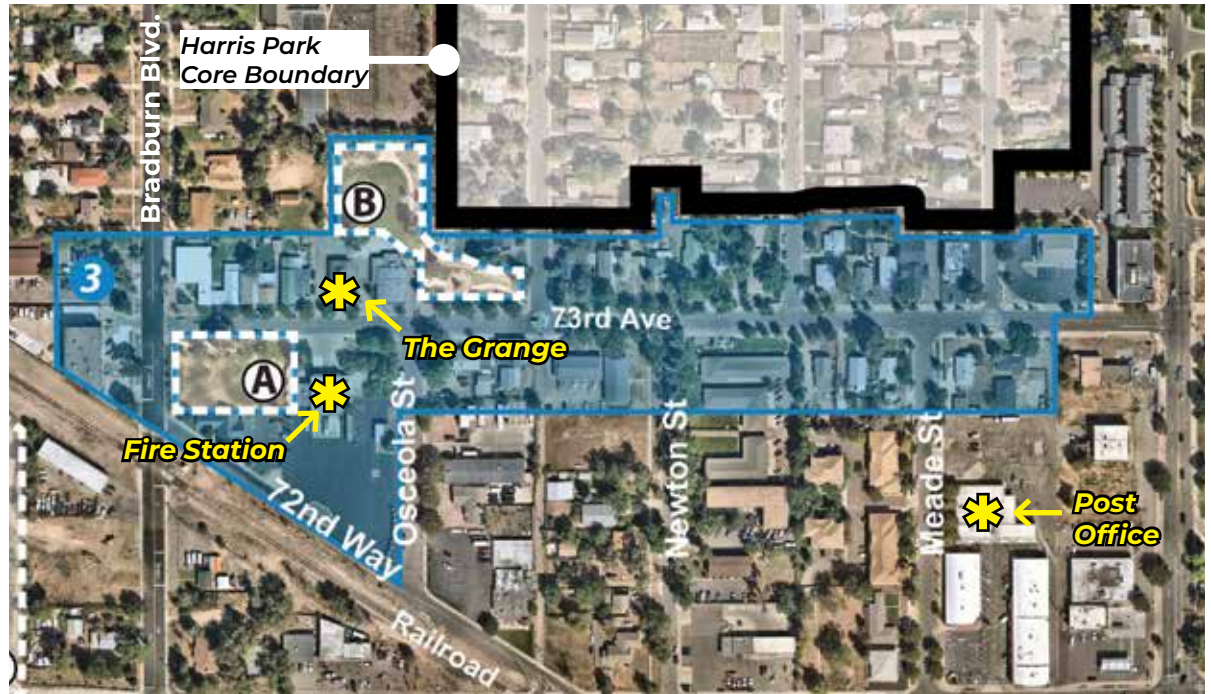


# Character Area 3

## Existing Conditions

Character Area 3 centers around 73rd Ave, capturing primarily one parcel on either side of the road from Bradburn to Lowell. A few properties directly west of Bradburn are also included, as well as the parcel directly south of Fireman’s Park.

Character Area 3 is currently a mix of single-family residential homes that have been adaptively reused as office spaces, commercial buildings, apartment buildings, and an institutional building. It also contains two important public spaces – Fireman’s Park and the 73rd Ave Sculpture Park.



## Community Vision

Character Area 3 incorporates “soft infill” development and adaptively reused residential buildings to accommodate more offices, galleries, restaurants, and businesses. Where residential buildings at the street edge are adaptively reused, a small residential structure is sometimes built behind the existing building to incorporate a mix of uses on the individual lot. The intersection of Bradburn Blvd and 73rd Ave is anchored by commercial buildings or public plazas and incorporates streetscape elements that indicate important gateway and wayfinding information to draw



*The front setback is appropriate for residential buildings and adaptively reused buildings along 73rd Ave.*



*Partially setting the second story back from the first story is appropriate.*

### Image Key

- ✔ Appropriate
- ✘ Inappropriate
- ? Potentially appropriate

*(Ratings are based on community input.)*





*The scale of this building is inappropriate for Character Area 3.*



*While a house in front adapted to commercial use with a new residential building to the rear is desirable for Character Area 2, the lack of a landscaped setback is not.*

visitors into the 73rd Ave core. While there may be a few select sites for larger commercial or mixed use infill projects, many projects incorporate adaptively reused buildings or façade improvements.

### Use

- A mix of uses including commercial, mixed use, single-family and multi-family residential, a grocery store, and restaurants that activate the area.
- Public spaces and community-serving buildings host community events.



*While the materials are appropriate, setting the second story back from the property line to prevent a sheer wall would be better.*

### Development Character

- One and two-story buildings
- Setting back a second story from the street edge, or concentrating two-story building elements to the rear of the site
- Gable roofs are important for residential development.
- Gable and flat roofs for commercial development
- A variety of materials, including wood and brick
- Landscaped setbacks should be incorporated for single-family buildings or buildings that are adaptively reused for retail, office, restaurants, etc.
- Commercial parking is accommodated on street and in existing private surface lots.
- Maintain existing tree canopy and landscaping within the right of way.

### Streetscape and Public Realm

- A streetscape that incorporates wide sidewalks with benches, trash cans, flower beds, and public art
- Bicycle facilities and bike racks should be incorporated along 73rd Ave.
- Unique streetscape character along 73rd Ave by incorporating elements such as lighting or landscaping

## Character Area 4

### Existing Conditions

The boundaries of Character Area 4 follow Lowell Blvd north from Hidden Lake High School until 75th Ave. One parcel is captured on either side of Lowell Blvd.

Character Area 4 consists of a variety of uses, but primarily multi-family residential, including townhomes and apartments. Limited commercial uses are also part of this Character Area.

### Community Vision

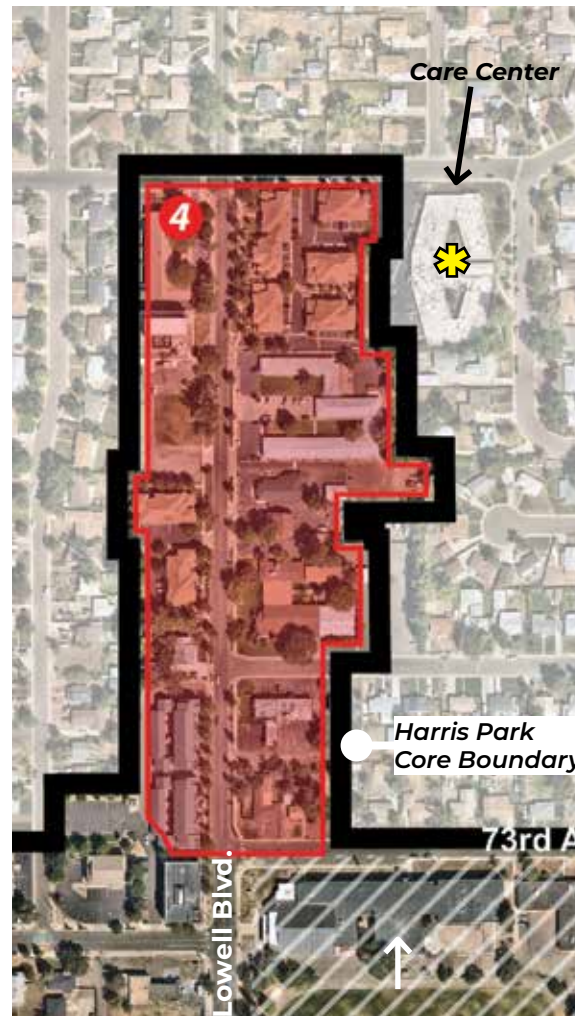
Character Area 4 stays residential in nature, but maintains existing commercial businesses. Moderate residential infill development, including multi-family residential, is incorporated. Efforts are focused on the "greening" (adding landscaping) of parking lots and vacant/underdeveloped properties.

### Use

- A range of housing options, including townhomes and multi-family residential development
- Some commercial uses

### Development Character

- Two-story buildings; potentially a small third-story component that is stepped back from the street edge



Brick is an appropriate material for Character Area 4.



Gable roofs and small third-story building components are appropriate for multi-family residential development.

### Image Key

- ✓ Appropriate    ✗ Inappropriate    ? Potentially appropriate

(Ratings are based on community input.)





While the flat roof form on these residential homes is inappropriate, landscaping in the front yard contributes to "greening" of the area.



While the gable roof form and scale of these residential townhomes is appropriate, brick and more muted colors would be more appropriate.



Outdoor seating for commercial businesses along Lowell Blvd is appropriate.



While third-story building components may be appropriate, fourth and fifth stories are inappropriate for Character Area 4.

### Development Character cont'd:

- Gable roof forms for residential buildings
- Gable and flat roof forms for commercial buildings
- A variety of materials, including brick and wood
- Traditional building elements
- Landscaped setbacks or landscaped buffers on private property, between the public realm and parking lots are important.

### Streetscape and Public Realm

- Maintain the existing streetscape with sidewalks separated from the street, landscaping within the right of way, and light posts.
- Enhance bicycle infrastructure.

# Character Area 5

## Existing Conditions

Character Area 5 captures the west side of Lowell Blvd between 73rd Ave and 72nd Ave and extends east to Meade St.

This Character Area primarily contains commercial development that is set back from the street. It also includes undeveloped and under-utilized land.

## Community Vision

Character Area 5 remains mixed use in nature and incorporates more intense, dense development, including businesses. New development, with retail or restaurant at the ground-level, helps anchor the gateway intersections at 72nd and 73rd Aves and helps support a more walkable, active street edge. The intersection of Lowell and 73rd is anchored by commercial buildings or public plazas and incorporates streetscape elements that indicate important gateway and wayfinding information to draw visitors into the 73rd Ave core.

## Image Key

- Appropriate
- Inappropriate
- Potentially appropriate

*(Ratings are based on community input.)*







The height of this building is inappropriate for Character Area 5 but the use of materials and general style is appropriate.



While the material and height are appropriate, breaking this building into more defined modules would be fitting.



While a large walking street is not realistic, smaller paseos between buildings that provide passage through a block are appropriate.



Two-story buildings that incorporate traditional features such as brick are appropriate.



Three-story, mixed use buildings with an active street edge are appropriate.

### Use

- A mix of uses is appropriate including both residential and commercial.
- Retail, restaurants, and other uses that activate the street edge (as part of a mixed use building) are crucial at the corners of 73rd Ave and Lowell Blvd, and 72nd Ave and Lowell Blvd to anchor the corners

### Development Character

- Two to three-story buildings; slightly taller features on corner anchor buildings may be acceptable.
- Brick as a primary material
- “Artistic” and “eclectic” building features as accents
- Create an active storefront through large display windows, awnings, canopies, etc.

### Streetscape and Public Realm

- Create a walkable street edge with detached sidewalks and trees buffering pedestrians from the street.
- Buffer pedestrians from parking lots.
- Emphasize the intersections at 72nd Ave and 73rd Ave with gateway elements, wayfinding signage, landscape palettes, and/or public art.
- Safety and traffic calming measures are needed at the intersection of 72nd Ave and Lowell Blvd.



# Character Area 6

## Existing Conditions

This Character Area is the farthest east in the plan boundary, and is in the northwest quadrant of the intersection of 72nd Ave and Irving St. It is bordered to the north and west by the Hidden Lake High School/Colorado Stem Academy.

Character Area 6 contains some small commercial buildings, but most are vacant or underutilized.

## Community Vision

New development defines Character Area 6 and anchors the corner of 72nd Ave and Irving St. It focuses on commercial, mixed use, and residential buildings that provide opportunities for businesses as well as a variety of housing types. Buildings are located at the sidewalk edge or with a small setback to create a walkable public realm. The scale of new development, especially along 72nd Ave and Irving St, should complement the scale of the transition zone detailed in the Westminster Station Area Plan. Small community spaces may also be a component of new development that can be programmed in a variety of ways throughout the year.



Three and four-story buildings are appropriate for Character Area 6.

### Image Key

- Appropriate
- Inappropriate
- Potentially appropriate

(Ratings are based on community input.)



*The scale and materials of this building are appropriate.*



*The lack of brick as a primary material and front facing entries make these townhomes inappropriate for Character Area 6.*



*Additional articulation and mass variation would make this building appropriate for Character Area 6.*



*While this townhome is an appropriate height, breaking the building into smaller modules would make it more appropriate.*

### Use

- Commercial, mixed use, and residential uses
- Small, flexible community spaces
- Adaptively reusing existing buildings

### Development Character

- Two, three, and four-story buildings, with an emphasis on two and three stories
- Strong corner elements, especially for new development at the intersection of 72nd Ave and Irving St
- Brick as a primary material; a variety of accent materials
- Large new buildings should be broken into modules using setbacks, changes in building height, etc.

### Streetscape and Public Realm

- Create a walkable pedestrian realm along 72nd Ave.
- Consider detached sidewalks with street trees and landscaping.



# Character Area 7

## Existing Conditions

Character Area 7 is triangular in shape and is the only Character Area south of 72nd Ave. Its northern boundary is 72nd Ave, its eastern boundary is Lowell Blvd and its southern/western boundary runs diagonally along the railroad tracks. This Character Area is directly across Lowell Blvd from the Station Area boundary.



This area is a mix of industrial, commercial and residential buildings. A few single-family buildings face Lowell Ave, and commercial buildings face 72nd Ave. Industrial buildings are located throughout the Character Area.

## Community Vision

The community's vision for Character Area 7 incorporates a range of uses and building types including light industrial, flex-office, live-work, mixed use, and commercial buildings. Residential-only development is inappropriate in Character Area 7. New development anchors the intersection of 72nd Ave and Lowell Blvd, and helps create a more active pedestrian edge along both roads. Infill development may reflect the small scale of existing buildings, but also may be two or three-stories in height, depending



Two-story buildings with defined entries are appropriate.



While this mixed use building incorporates masonry and other materials, the third story is only appropriate in a scenario with a larger amount of infill development.

### Image Key

- ✔ Appropriate
- ✘ Inappropriate
- ? Potentially appropriate

(Ratings are based on community input.)



*A mix of materials and clear entry definition make this mixed use building appropriate.*



*This one-story, masonry building is appropriate for Character Area 7.*



*Creative forms for infill development are appropriate in Character Area 7.*

on its use. Creative destination uses (those that attract patrons on their own) and shared plaza spaces may also help activate this Character Area.

#### *Use*

- A variety of uses including mixed use, light industrial, flex, commercial, and live-work (no stand-alone residential)
- Small, shared green spaces and plazas

#### *Development Character*

- One, two, and three-story buildings
- Entry definition is important.
- Active ground floors for mixed use buildings
- A variety of materials, although incorporating some masonry is important
- Some creative forms and building features may be acceptable.

#### *Streetscape and Public Realm*

- Enhance 72nd Ave and Lowell Blvd intersection.
- 72nd Ave should have a detached sidewalk with street trees and landscaping to buffer the pedestrian from parking and industrial sites.
- Add lighting throughout, and especially along Lowell Blvd and 72nd Ave to address concerns regarding safety.
- Refer to the Westminster Station Area Plan for adding pedestrian crossings across Lowell Blvd at 71st Ave or just north of the railroad.



# Character Area 8

## Existing Conditions

This Character Area sits at the center of the study area. It is defined by 72nd Ave to the south, railroad tracks, and Osceola St to the west. Its northern boundary is one parcel south of 73rd Ave and its eastern boundary is Meade St.

Currently, this Character Area contains primarily residential uses, which includes a mix of single family and multi-family development. Along the southern, eastern, and western boundaries of the Character Area, commercial developments with large parking lots are present. Undeveloped and underutilized lots also exist.

## Community Vision

New, moderate density, mixed use infill development is located throughout the Character Area, surrounded by existing and new residential development. A variety of residential development types will be available, including housing that is affordable for a range of incomes. Infill development will be prioritized along north/south streets including Osceola St, Newton St, and Meade St to create a connection between the 73rd Ave and 72nd Ave commercial corridors. The scale of development increases as it approaches 72nd Ave.



Outdoor spaces that accompany a business or restaurant are appropriate.

### Image Key

- Appropriate
- Inappropriate
- Potentially appropriate

(Ratings are based on community input.)



This three-story building with an active storefront is appropriate along 72nd Ave. A similar building that was two-stories would be appropriate throughout the Character Area.



*While these building materials are appropriate, reducing the height to three-stories would make it fitting for 72nd Ave, and to two-stories would make it suitable throughout the Character Area.*



*The use of brick is appropriate on this building; however, the height and lack of an active storefront make this building inappropriate.*



*The scale of this building is appropriate throughout the Character Area.*

- Mixed use and residential development are most appropriate.
- Some commercial buildings may be appropriate.
- Outdoor spaces that accompany a business or restaurant are appropriate.

#### **Development Character**

- Two and three-story buildings are appropriate; a partial third-story component that is set back from the street is also appropriate.
- Taller buildings (three-story) are located along 72nd Ave, not in the core of this Character Area.
- Brick, and potentially other masonry materials, should be the primary material.
- Larger buildings should be visually broken into smaller components.
- Creating an active storefront through large display windows, awnings, and canopies – among other elements – is important.

#### **Streetscape and Public Realm**

- Enhance pedestrian facilities and walkability.
- 72nd Ave should include a detached sidewalk with street trees and landscaping.
- Incorporate benches, planters, and bike racks throughout the area.



# Character Area 9

## Existing Conditions

This Area is triangular in shape and is bordered on the west by the Westminster Community Garden and the Little Dry Creek regional bike trail. 72nd Ave is the southern border of this Character Area, which is bisected by Bradburn Blvd. The Railway borders this character area to the north.

Character Area 9 is a mix of single-family residential, commercial, and light industrial uses, as well as some underdeveloped land.



## Community Vision

This area becomes a hub for creative infill development and “destination” businesses that attract patrons on their own. Some mixed use and residential infill development also help fill in the underutilized land in this Character Area. New development and a more walkable street edge will also encourage visitors to continue one block north to the 73rd Ave commercial corridor or continue east onto the 72nd Ave commercial corridor. A bicycle and pedestrian connection to the Little Dry Creek trail passes through the area, providing off-street access to the Westminster Station. Mountain views are a highlight.



*Destination uses, which may include outdoor dining spaces, are appropriate in Character Area 9.*



*Sidewalks protected by a landscape area are desired throughout Character Area 9.*

### Image Key

- ✔ Appropriate
- ✘ Inappropriate
- ? Potentially appropriate

*(Ratings are based on community input.)*



*This two-story family-style restaurant is an example of a destination use that would be appropriate for the area.*



*While this residential building exhibits traditional features, its lack of setback and minimal space between the neighboring home is inappropriate for Character Area 9.*



*Creative infill development with unique building materials is encouraged. However, a building should be modulated into smaller components.*



*Residential buildings like this duplex should incorporate traditional features such as a gable roof and front porch.*

### Use

- An increased density with creative infill development and unique, “destination” uses, including parks
- Commercial and residential infill
- Variety of housing types including duplexes and townhomes

### Development Character

- Two and three-story buildings, as well as taller single-story commercial buildings
- Taller building elements at the intersection of Bradburn Blvd and 72nd Ave to anchor the corner
- A variety of materials including wood, brick and corrugated metal in continuity with the surrounding context
- Residential buildings should incorporate traditional features including gable roofs and front porches that reflect the character of Bradburn Blvd to the north.

### Streetscape and Public Realm

- Pedestrian-friendly public realm facilitated by wide, detached sidewalks along 72nd Ave, protected by street trees and landscaping
- Sidewalks protected by a landscaped area are needed along Bradburn Blvd.
- Trail connection to Little Dry Creek Trail are needed.
- Connection to the Westminster Garden are needed.

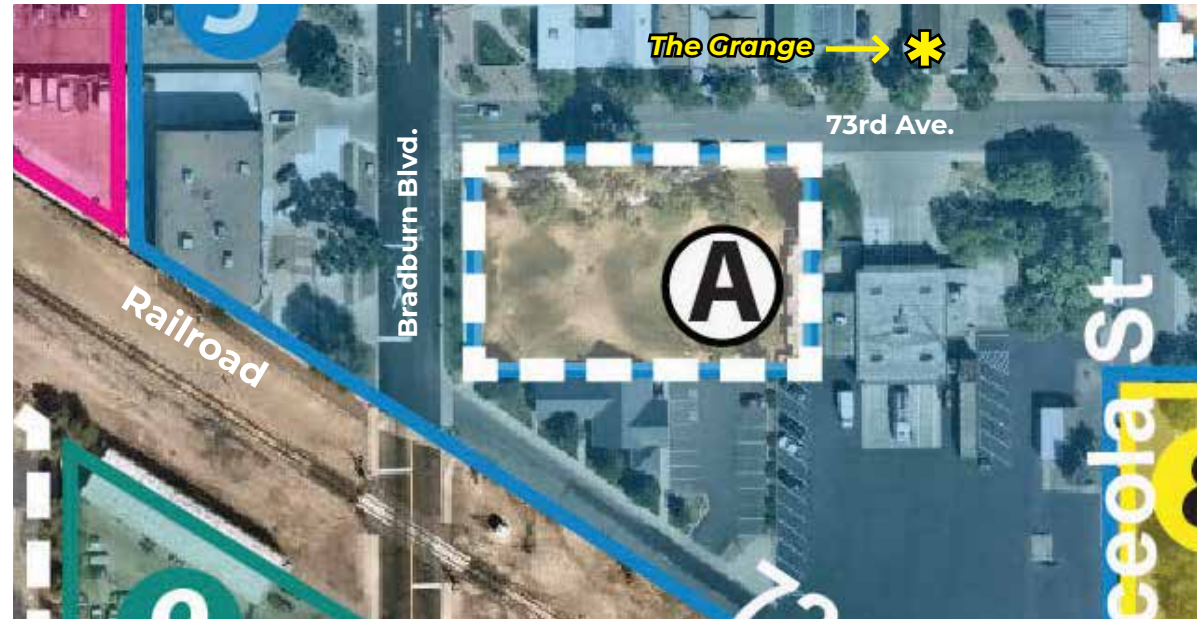


## Public Spaces

Within the Core, three public places contribute to the character of Harris Park. The vision for each of the public spaces, as identified by community members through image selection and comments, is provided on the following pages.

### Fireman's Park

Fireman's Park (Public Space A) sits at the southeast corner of 73rd Ave and Bradburn Blvd. It is bordered to the east by the fire station and to the south by an office building. Currently, the park does not include any structures or amenities aside from a picnic table located on the north side.



### Community Vision

Create a master plan for the park and consider the following:

- Adding amenities, such as a picnic shelter, playground, amphitheater, and/or court sports
- Maintain flexibility for a variety of events and programming.
- Ensure adequate parking is available for proposed improvements.



*Incorporate structures that provide flexibility for a variety of events and programming.*



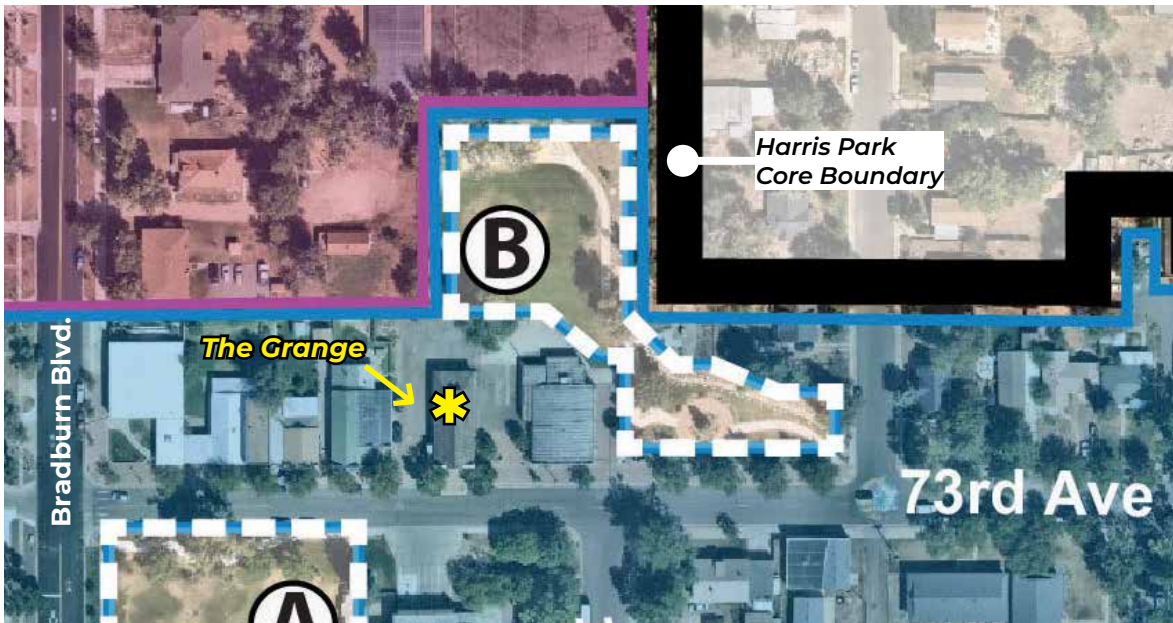
*A playground may be appropriate for Fireman's Park, but a smaller playground would better fit the site.*

### Image Key

✔ Appropriate 
 ✘ Inappropriate 
 ? Potentially appropriate

*(Ratings are based on community input.)*





### 73rd Ave Sculpture Park

The 73rd Ave Sculpture Park (Public Space B) is located at the corner of 73rd Ave and Orchard Court. It is bordered to the north by the Westminster Presbyterian Church, to the northeast and east by residential development, and to the south and southwest by commercial development. The park includes a pathway and a variety of sculptures, connecting the parking lot of Westminster Presbyterian Church to 73rd Ave.

#### Community Vision

- Encourage additional uses of the space, such as a Farmers Market, art walks, or concerts.



Explore programming opportunities, such as concerts, for the Sculpture Park.



Host seasonal and recurring events, such as a Farmers Market, in the Sculpture Park.



Consider incorporating the Sculpture Park into an art walk.

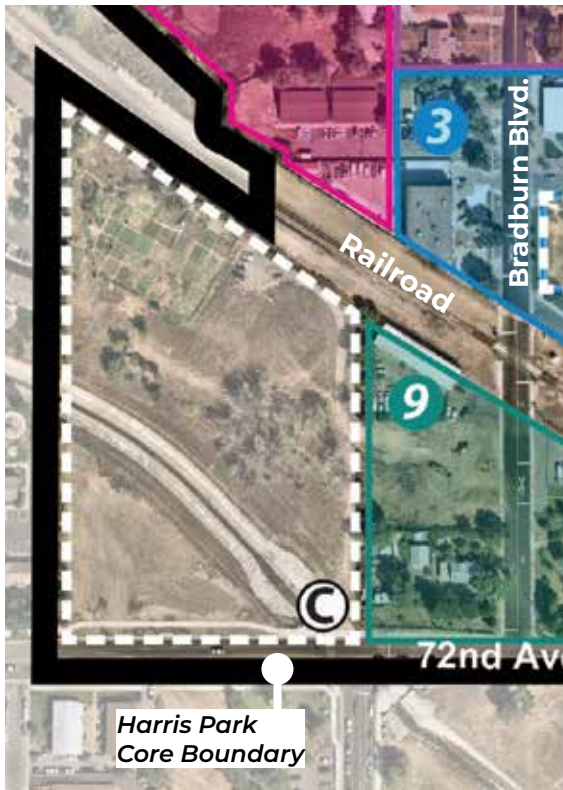


## Westminster Garden

Located in the southwestern corner of the Core, the Westminster Garden (Public Space C) occupies land spanning from 72nd Ave to the railroad tracks. The site is also split by the Little Dry Creek Trail. The space currently includes a garden on the northwest corner, with a large portion of the site underutilized.

### Community Vision

- Maintain the existing community garden on the northwest corner and consider enlarging it.
- New structures should be limited to keep this area primarily landscaped, though the addition of a new facility for small community gatherings should be explored.
- Consider constructing active spaces, such as sport courts, on the portion south of the Little Dry Creek Trail.
- Program the space with new and recurring events such as a farmers market.
- In any new development or programming, emphasize the natural landscape including the floodplain, topography, and trees.



Construct a permanent structure(s) that could be flexibly used for a variety of community functions, including a gazebo.



Consider constructing active spaces, such as sport courts, on the portion south of the Little Dry Creek Trail.



Expand the community garden and improve access.

## Illustrative Opportunity's Sketch Plan

The Illustrative Opportunities Sketch Plan on the following page summarizes the overall framework, design character, and larger scale design components of the plan vision. Public and private improvements illustrate a vibrant mix of uses, buildings, and open spaces. **The Illustrative Plan is visionary and does not provide an exact blueprint for development. These sketches also do not imply public acquisition or initiative.** It does, however, provide guidance and shows how plan recommendations can combine to produce a pedestrian-friendly place with distinctive characteristics.

In addition to the full Illustrative shown on the following page, sketch details also provide more focused views of individual pieces (see pages 44 through 46.) Each sketch is annotated to highlight key features that community members have noted through the public outreach efforts as being ideal characteristics of the Harris Park Core.

Key features in the Illustrative Opportunities Sketch Plan include:


- A more urban character with higher density and buildings that frame streets and anchor corners
- A more attractive and distinctive neighborhood with enhanced streets, small outdoor plazas, and views toward the mountains
- A more accessible area with safe and defined pedestrian connections, and parking located behind buildings that is accessed by a side street or shared drive
- An active community area with parks, plaza spaces, and enhanced recreational trails and community gardens




## Map #6: Opportunities Sketch Plan

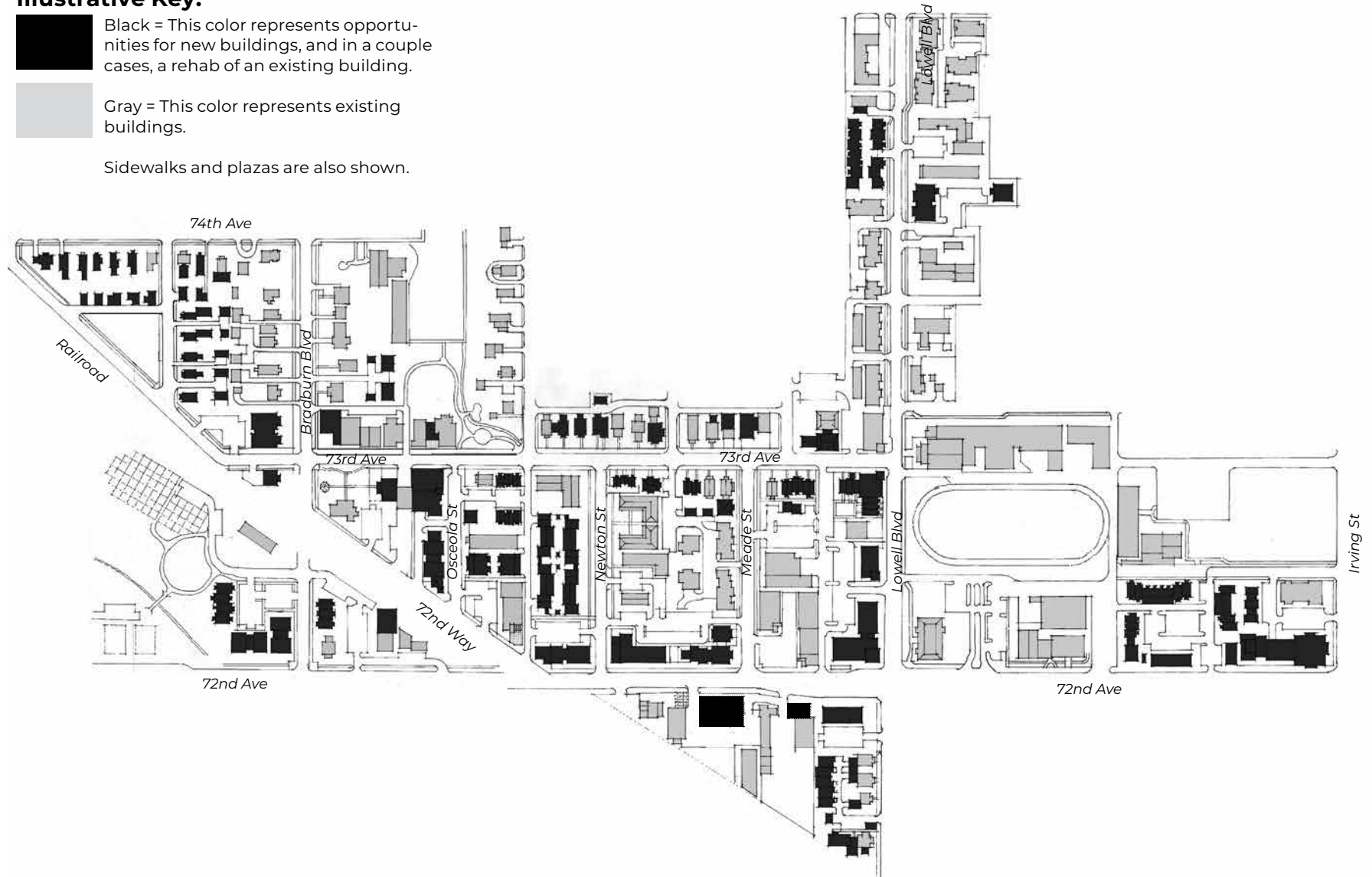
The Opportunities Sketch Plan captures the community vision for each of the Character Areas and public areas. It shows a mix of existing development (gray) and infill development opportunities (black), which is meant to provide guidance to property owners, business owners, and developers for future projects in the Core. This Sketch Plan does not imply that redevelopment will occur, as that will be left to the initiative of individual property owners.

### Illustrative Key:

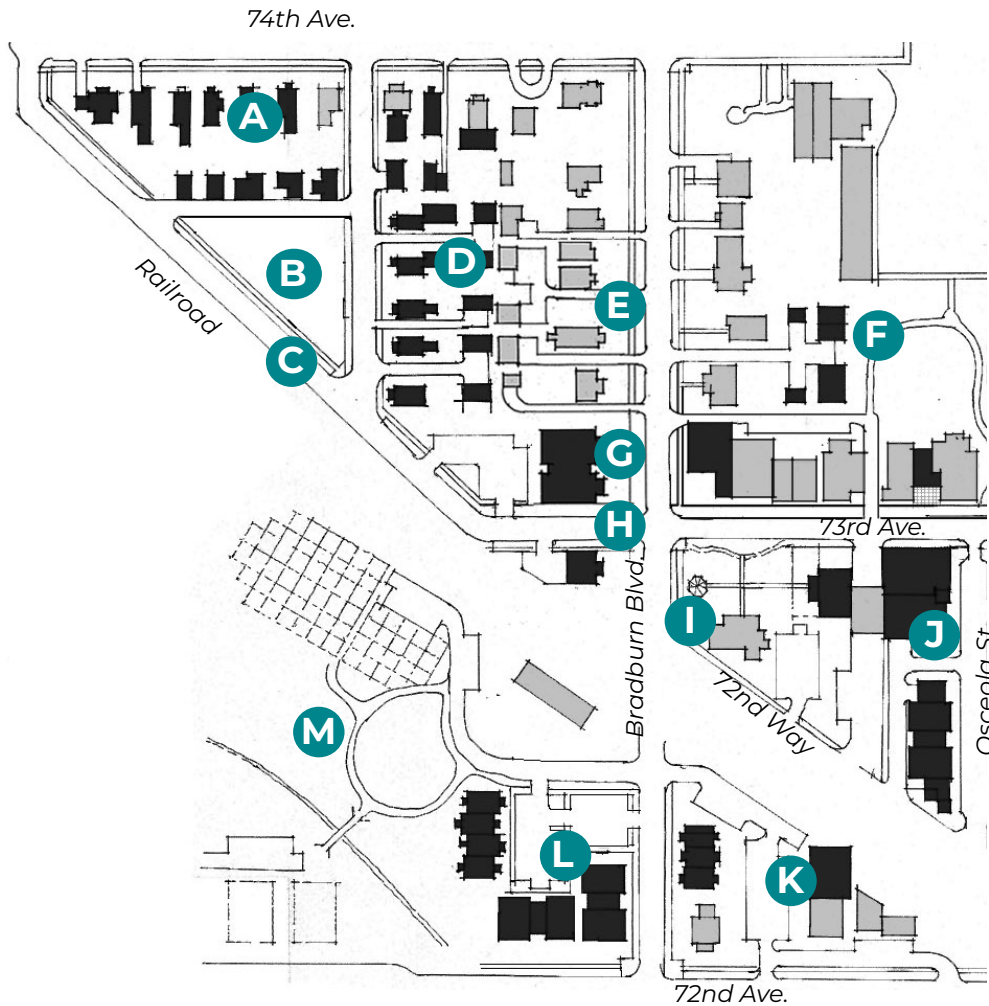
 Black = This color represents opportunities for new buildings, and in a couple cases, a rehab of an existing building.

 Gray = This color represents existing buildings.

Sidewalks and plazas are also shown.



## Map #7: Plan Detail 1 - Investment Opportunities

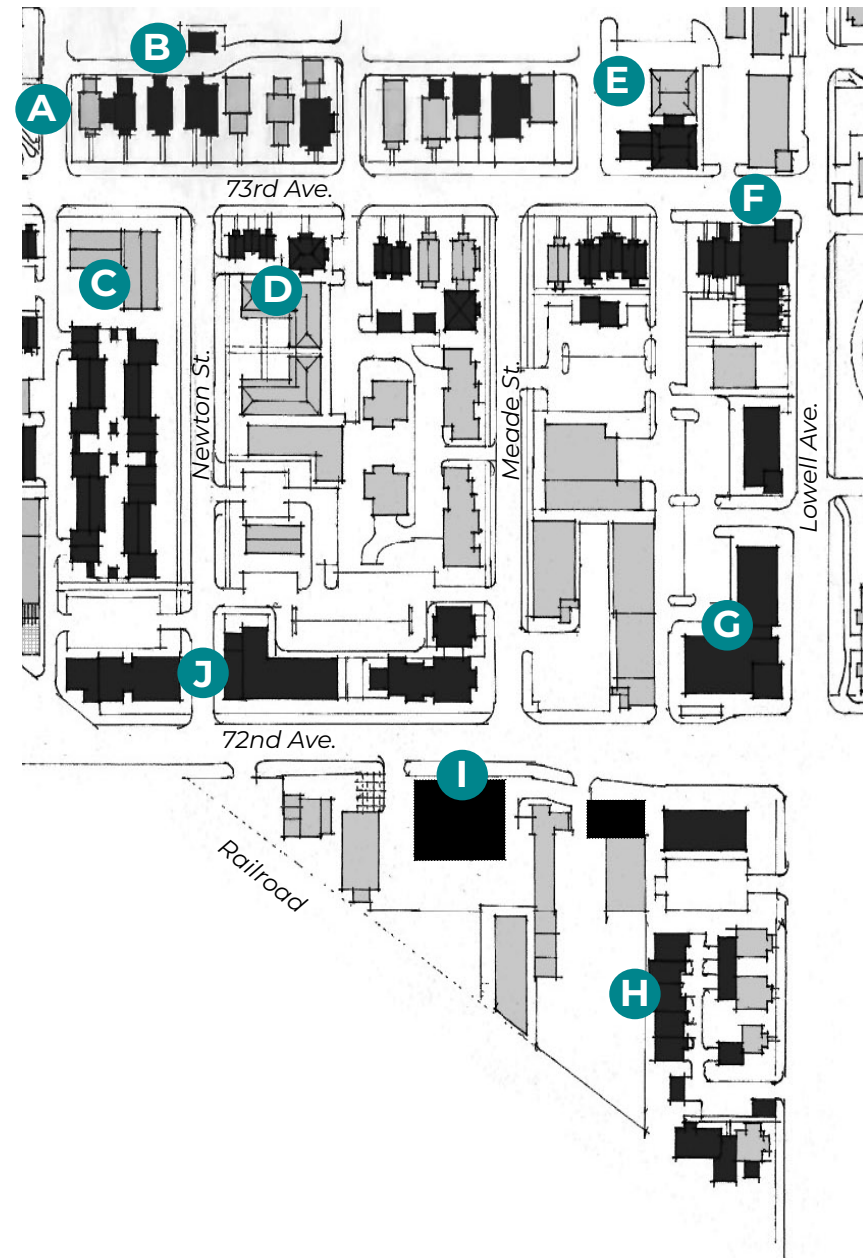


- A** Single-family residential added along 74th Ave that reflects existing buildings, with garage access at rear of site
- B** New green space is provided.
- C** Railroad buffered by a road and landscaping
- D** Increased density with the addition of single-family and multi-family residential buildings
- E** Adaptive reuse of existing homes along Bradburn Blvd
- F** Parking and Accessory Dwelling Units (ADU) accessed by a shared drive
- G** Multi-family building along Bradburn to increase available housing
- H** 73rd Avenue continues west to access new residential development
- I** Gazebo added in Fireman's Park, but park is kept flexible for a variety of programming possibilities
- J** Multi-family residential development added behind next to the Fire Station, moving south along Osceola St
- K** "Destination uses" added along 72nd Avenue, behind some existing buildings
- L** Mixed use development added along Bradburn Blvd
- M** Westminster Garden enhancements follow the England Park Corridor Plan, including expanded community gardens, trails, sheds for storage space, and sport courts

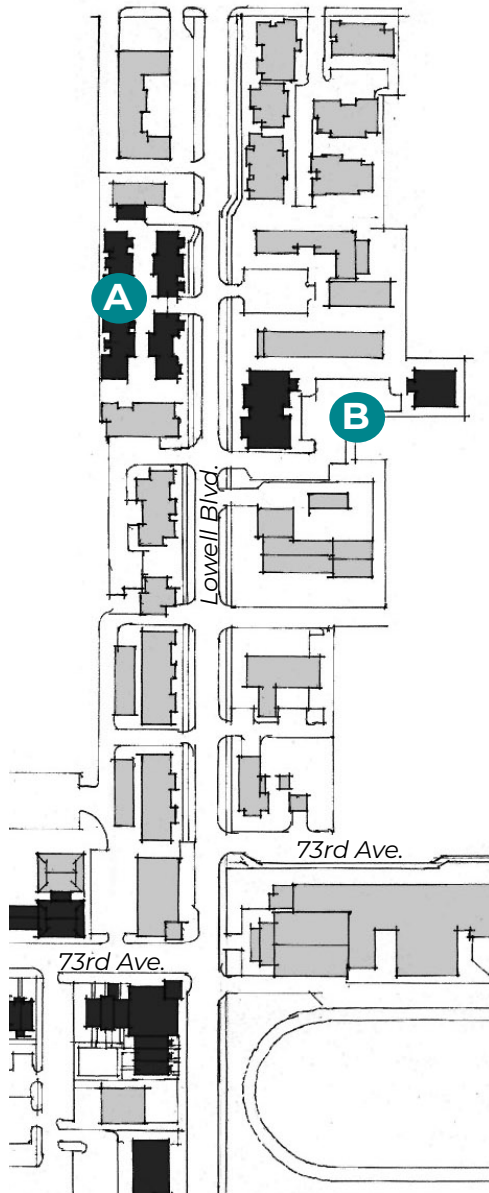


## Map #8: Plan Detail 2 - Investment Opportunities

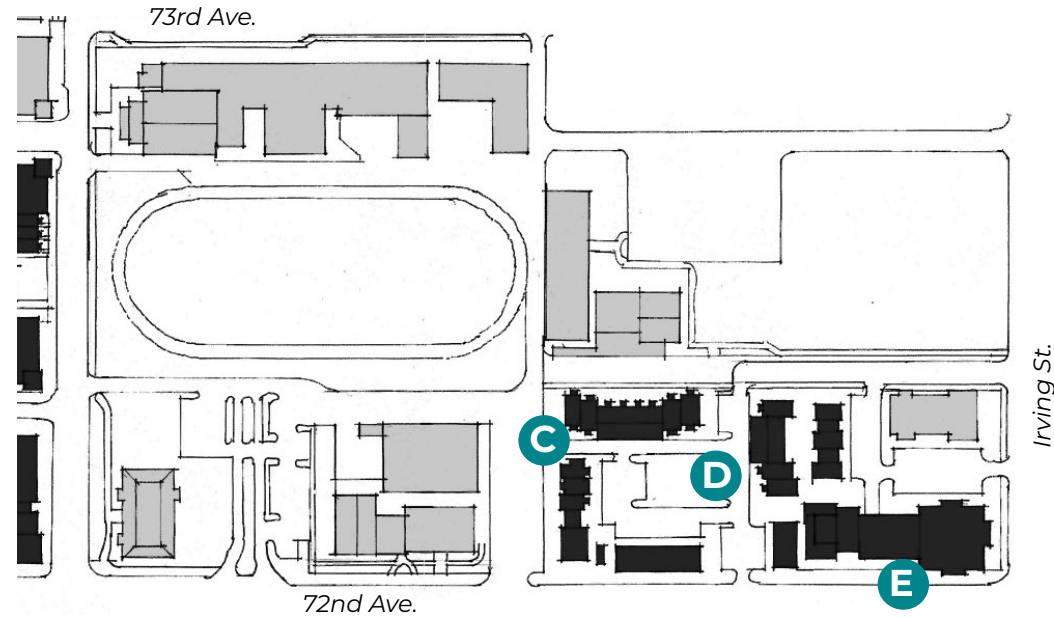
- A** Existing single-family buildings connected to create an opportunity for additional office or retail space
- B** New development reflects existing residential characteristics including setbacks; ADUs located in the rear provide additional density and housing
- C** New multi-family residential development includes underground parking
- D** Lower-scale multi-family residential development along 73rd Ave.
- E** Additions to the front of an existing building anchor the corner and provide additional retail or office space
- F** New building anchors the corner to reflect the anchor to the north; townhome portions of the new building offer additional housing
- G** New building at the corner of 72nd Ave and Lowell Ave. anchors and provides a gateway into the Harris Park Core
- H** Live/work residential with flex office/industrial; parking is accessed from shared drives to minimize curb cuts along Lowell Ave.
- I** New office/industrial on 72nd Ave; shared parking is accessible through consolidated curb cuts; majority of parking is available to side and rear of buildings
- J** New commercial development strengthens 72nd Ave; parking is located to the rear of buildings and accessible from north/south streets



## Map #9 & Map #10: Plan Details 3 & 4 - Investment Opportunities



**Map #9**



**Map #10**

- A** Additional multi-family development along Lowell Ave reflects existing townhomes and provides additional housing and density
- B** New commercial or office space located at the street and to the rear; shared parking is accessed by a single curb-cut
- C** Residential development added along 72nd Avenue and to the rear of existing buildings to make use of underutilized properties in the Core
- D** Shared parking on the interior of the site provides space for employees and patrons during the day and new residents in the evening; the larger parking area could also be turned into a small outdoor event space, if desired
- E** New commercial or office development along 72nd Ave creates a more solid street wall and inviting experience for pedestrians, cyclists, and drivers entering the Harris Park Core



## *Bird's Eye View - Opportunities Sketch*

This bird's-eye view illustrates, in general, the character that the Core could have in the future, with a variety of public and private investments. Many existing businesses have improved their properties and new, compatible infill construction has brought new businesses and services into the area. A mix of housing choices is available to established residents and to newcomers who bring added vitality to the area.





## *Bird's Eye View - Opportunities Sketch Detail*

The bird's-eye view what future development may look like in a three-dimensional way for a part of the core. It illustrates the potential scale and character of development within the Harris Park Core.





# Chapter 3

## Connectivity & the Public Realm

While establishing the use and design aesthetic for each Character Area is key to envisioning the future of the Harris Park Core (as discussed in Chapter 2), planning for the public realm is also important. As residents and visitors travel to and through the Harris Park Area, a sense of arrival should welcome them. Navigating through the Area should be easy and assisted by a variety of signage to identify key destinations and guide people. Pedestrians, cyclists, and transit riders, in addition to motorists, should find the Harris Park Area comfortable to navigate in any manner due to its improved connectivity. It should also be easily accessible from the Westminster Station and the Little Dry Creek Trail/England Park Corridor.

This chapter addresses connectivity of the Harris Park Area and provides recommendations for new and improved connections. Images illustrate what these connections may look like.



*Creating safe and accessible pedestrian pathways to and through Harris Park was identified by community members as a key component of the public realm.*



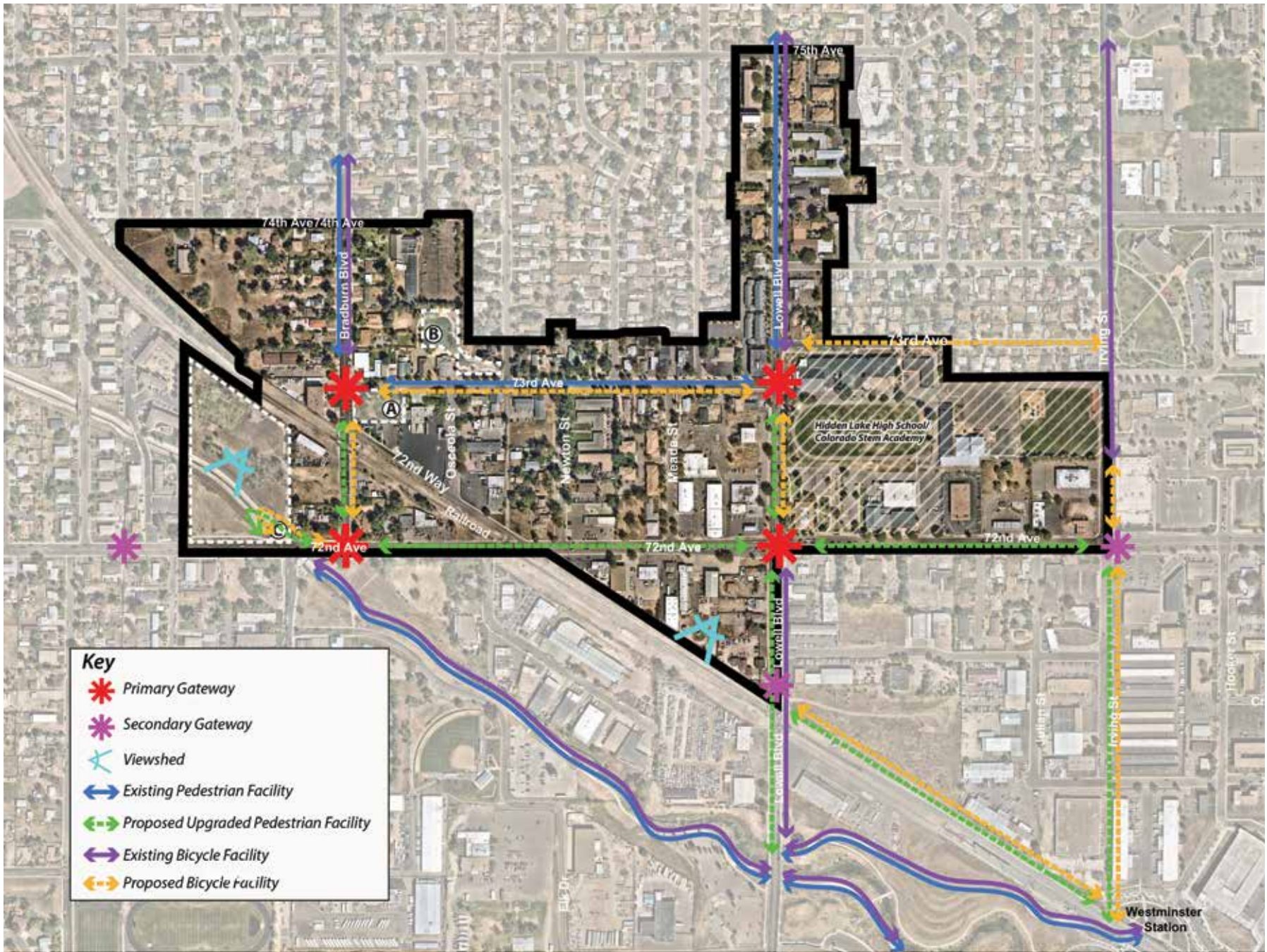
*Welcoming residents and visitors to Harris Park using gateways and wayfinding should be considered. Features that could be incorporated are discussed on page 51.*



*Extending and enhancing the existing bicycle network to and through Harris Park will bring more visitors and connect the neighborhood to places such as the Westminster Station.*



# Map #11: Connectivity Framework





## Connectivity & Placemaking

Connecting people to the Greater Neighborhood and to specific destinations is crucial to achieving the community's vision for the Area. Key components include: utilizing gateway signage to draw attention to the Core; incorporating wayfinding signage to direct people to and through the Area; and adding new bicycle, pedestrian, and vehicular connections while improving existing ones. All wayfinding materials should continue to promote the Historic Westminster branding. Using public art in wayfinding is also a priority. Wayfinding materials also should use universal symbols to reach a broad range of languages in the Area. Map #11 illustrates each of these key components, as identified through the community workshops and focus group meetings.

### Primary Gateway

A gateway helps people understand their location and find nearby destinations. They provide visual cues, such as signs or branding.

A primary gateway identifies a key intersection and opportunity to welcome people to Harris Park. Primary gateways in the Greater Neighborhood are located within the

project boundaries. These are identified by the red stars in Map #11.

### Secondary Gateway

A secondary gateway identifies a specific area or destination through visual cues, which could include signage or landscaping. It is physically smaller and alerts a person to a destination farther from its location. The secondary gateways identified by the community are located at the project boundary or just outside it. These are identified on the map in purple stars. Note that a secondary gateway is desired at the intersection of 78th Ave and Bradburn Blvd, but is not shown on the map because it falls many blocks north of the map boundaries.

### Viewshed

Viewsheds are where new development should either preserve an important view or capitalize upon it through a design feature such as a rooftop deck. The two viewsheds noted on Map #11 take advantage of the topography of the site, looking in the direction of the mountains. One viewshed looks over the railroad and the other looks over the Little Dry Creek Trail.

### Existing Pedestrian and Bicycle Facilities

Existing connections for pedestrians and bicyclists are important in identifying how people enter Harris Park,

move through the neighborhood, and connect to destinations nearby. The solid blue lines on the map note existing pedestrian facilities, namely sidewalks, and the solid purple lines identify existing bicycle facilities, including off-street trails and shared street facilities ("sharrows").

### Potential Bicycle Facilities and Upgraded Pedestrian Facilities

Potential pedestrian and bicycle facilities identified by the community highlight places in need of new or improved means of moving through Harris Park. This could include sidewalks, bike paths, sharrows, off street trails, better lit pathways, or places to sit along a pathway. Of particular concern is the streetscapes along 72nd Ave. and Lowell Blvd. Dashed green lines on the map identify locations for proposed updated pedestrian facilities, and dashed yellow lines illustrate proposed bicycle facilities.

Defining the character of these components is critical to the creation of a unique sense of place. The following pages include key recommendations and images for each public realm feature.

# HISTORIC WESTMINSTER

EST. 1870

Consider incorporating signs that indicate Historic Westminster.



Utilize smaller, vertical monument signs throughout the core.

## Image Key

- ✔ Appropriate
- ✘ Inappropriate
- ? Potentially appropriate

(Ratings are based on community input.)



Incorporate one or two strong gateway elements that are designed to be in scale with the area.



Consider incorporating smaller street signs that indicate multiple destinations.



Design signs to be unique to Harris Park. Signs that look commercial in nature should be avoided.

## Gateways and Wayfinding

Clear, distinctive gateways and wayfinding signage will help establish the Harris Park Area as a destination in metro Denver. Gateways and wayfinding signage are key branding components and assist visitors in navigating the area, especially those that arrive from Westminster Station. Components to consider include:

### Community Vision for Gateways and Wayfinding

- Incorporate one or two strong gateway elements, such as an arched sign over a roadway or public art.
- Utilize smaller, vertical monument signs throughout Harris Park. Consider placing them in a series throughout the core.
- Consider incorporating smaller street signs that indicate multiple destinations and provide directional arrows. These are particularly needed for the Historic Westminster Arts District.
- Adding maps of Harris Park with street names and key destinations to some signs may be appropriate.
- Design signs to be in scale with the area, to have a historic feel, and to be unique to Harris Park.
- Signs that look commercial in nature should be avoided.
- Consider lit street signs throughout the Greater Neighborhood.



## Connections: Crossings, Sidewalks, and Bicycle Facilities

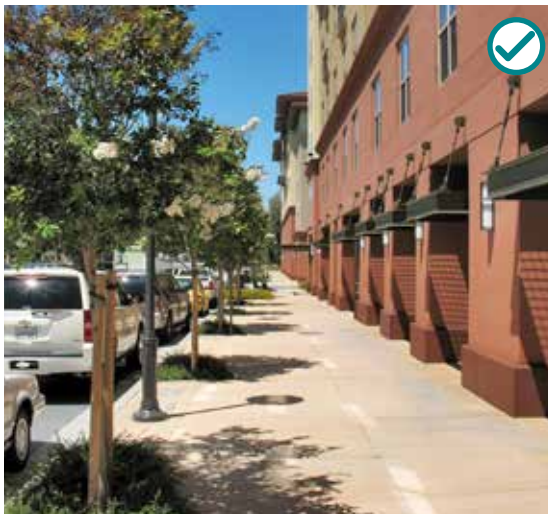
Providing safe and attractive pedestrian, bicycle, and vehicular connections throughout the greater Harris Park neighborhood and to destinations just outside of the Core helps direct people into and through the area, creates accessible destinations, and enhances the neighborhood's desirability.

### Community Vision for Connections

- Visually distinguish pedestrian crosswalks through the use of contrasting paving materials and/or colors and art.
- Design new sidewalks and update existing sidewalks to be ADA accessible.
- Incorporate public spaces, such as outdoor eating areas, near sidewalks.
- Enhance sidewalks along 72nd Ave by widening them and incorporating a landscaped area between the sidewalk and the street.
- Complete the sidewalk network throughout the Core and incorporate wide sidewalks that create a pleasant pedestrian experience.
- Consider elements such as landscaping and light posts located near the sidewalk.
- Incorporate bike lanes that are visually distinguished. Where possible, incorporate an off-street or separated bike lane.
- Strategically locate bike storage facilities along the bike path.



*Incorporate public spaces near sidewalks.*



*Enhance the sidewalks along 72nd Ave by widening them and incorporating a landscaped area along the street.*



*Visually distinguish pedestrian crosswalks.*



*Incorporate bike lanes that are visually distinguishable.*



*Where possible, incorporate an off-street, separated bike lane.*



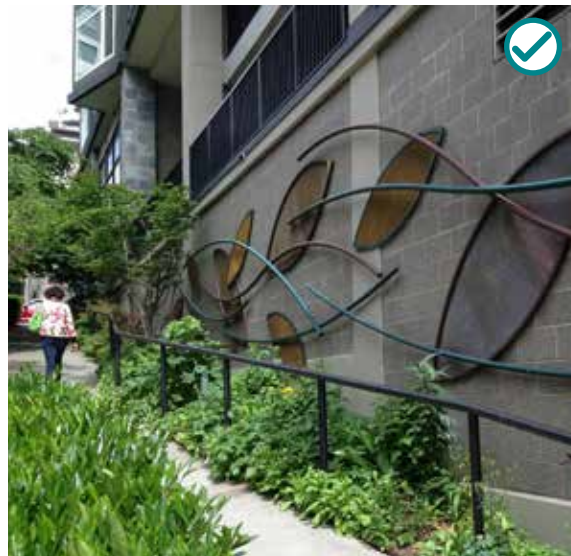
Add benches throughout the public realm.



Consider incorporating a water feature in one of the three primary public spaces.



Consider constructing a pavilion that can be utilized for a variety of events and festivals.



Incorporate artistic elements throughout the Core.

## Public Realm Features

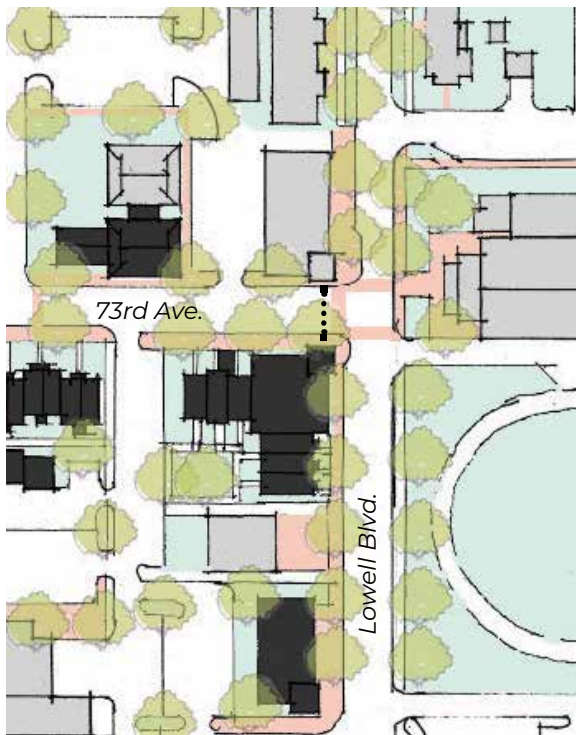
Incorporating features within the public realm that enhance the experience is very important to extending the amount of time people spend in the Core and encourage them to come back.

### Community Vision for Public Realm Features

- Add benches throughout the public realm in areas that are logical and shaded.
- Incorporate adequate trash and recycling bins
- Promote a cohesive design scheme for street lights.
- Consider incorporating a water feature, or other "active" feature, in one of the three key public spaces, while ensuring that the space can still be utilized for other functions. For example, if a water feature is added, ensure that it can be turned off and the space programmed with other events.
- Consider including picnic tables in the Sculpture Garden.
- Incorporate landscaping and planters throughout the Harris Park Area, especially along sidewalks.
- Promote the use of parklets, especially along the walk from the RTD station to the core.



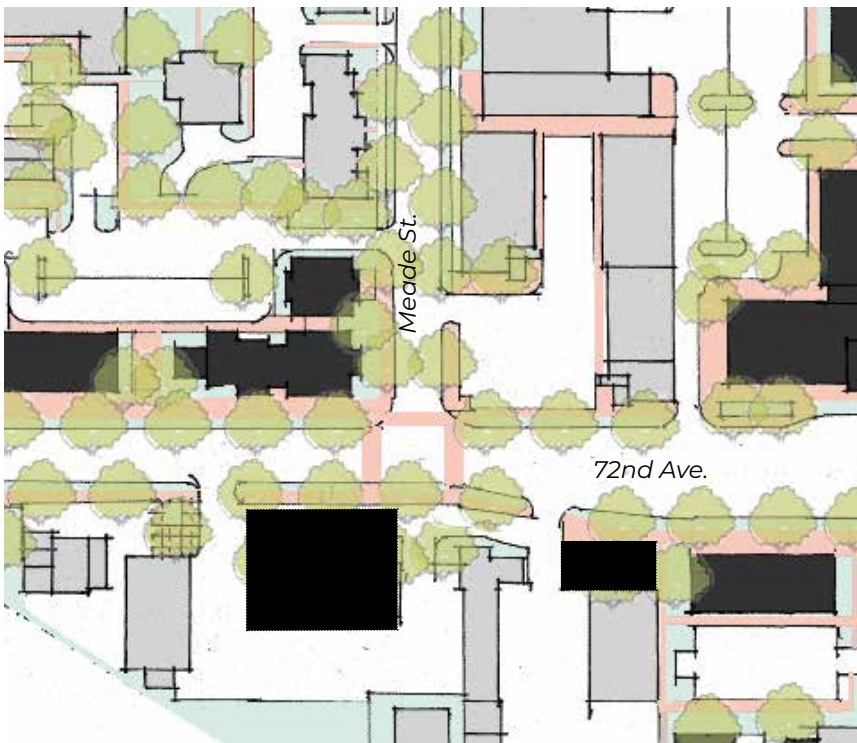
- Consider constructing a stage or pavilion in one of the primary public spaces that can be utilized for a variety of events and festivals.
- Incorporate artistic elements throughout the Harris Park Area. These could be functional objects, standalone pieces, or incorporated into a development.
- Assure that features in the public realm accommodate a wide range of users, including people with dogs and toddlers.



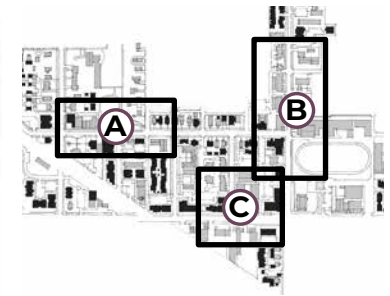
**(B)** Plan View - Lowell Boulevard Public Realm Opportunities Sketch Detail



**(A)** Plan View - 73rd Avenue Public Realm Opportunities Sketch Detail

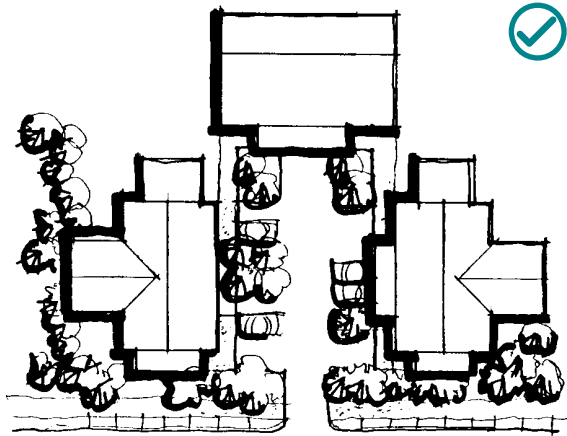


**(C)** Plan View - 72nd Avenue Public Realm Opportunities Sketch Detail



Plan View Key

*Excerpts from the illustrative plan show how landscaping and streetscape improvements in the public realm could enhance connectivity, walkability, and the pedestrian experience.*



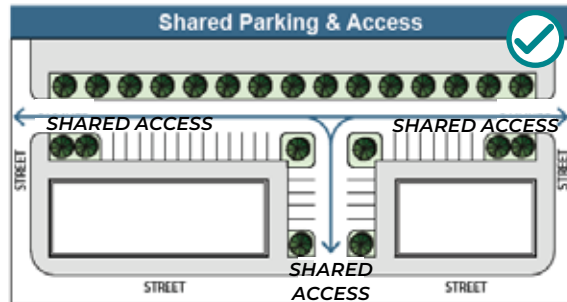
## Parking

The location, design, and quantity of parking will significantly impact the success of the Area as a retail, business, residential, and cultural destination. If parked cars are visually obtrusive, the area's viability as a pedestrian destination will be diminished. Many residents, employees, and visitors will, however, continue to use private automobiles. Thus, the amount of parking should reflect the type and intensity of use, rather than being based on typical suburban requirements.

*This shared parking scenario provides parking for three buildings. Consider this type of solution for parking in the Core.*



*Consider striping parallel and/or angled parking along 73rd Ave.*



*Consider locations for shared parking throughout the Harris Park Area.*

Adjacent on-street parking should be counted towards meeting off-street parking requirements. Parking requirements should be reduced based on the parking demand generated by a specific use. Adaptive reuse projects



*Design parking to minimize negative impacts on the desired urban, pedestrian-oriented character of the Core.*

should not be required to provide off-street parking if none was required in the era of their construction. Shared parking schemes should also be explored where it can be demonstrated that two or more uses on a particular site reach peak activity at different times of the day.

In addition to utilizing the appropriate parking ratios, designing parking to minimize negative impacts on the desired urban, pedestrian-oriented character of the Core is key. Refer to Chapter 5 for appropriate design principles for parking areas.

### Community Vision for Parking in the Harris Park Area

- Review the parking and mobility study to determine parking supply and future transportation needs.
- Assure that parking areas are well-landscaped.
- Consider locations for shared parking throughout the Harris Park Area, and including at the RTD station. Also, plan for their maintenance.
- Regularly review parking needs in Harris Park.
- Consider striping parallel and/or angled parking along 73rd Ave to delineate spaces and encourage denser parking.
- Provide a coordinated sign system that clearly explains parking limits and use.



# Chapter 4

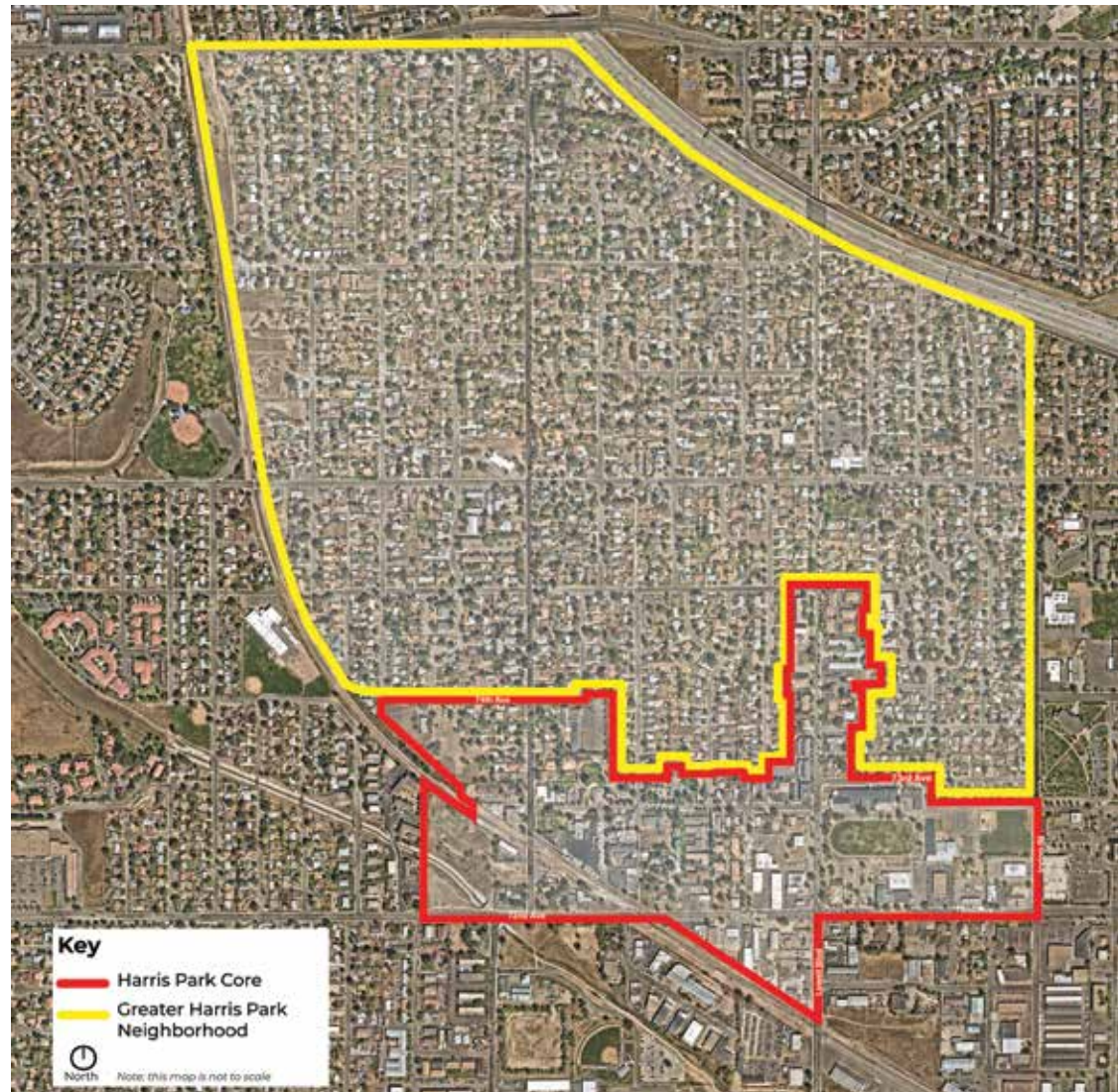
## Planning for the Greater Harris Park Neighborhood

The Greater Harris Park Neighborhood (referred to as "Greater Neighborhood") primarily contains residential buildings, including single family residences, duplexes, and small apartment buildings. It also includes a few churches and small businesses.

Throughout the public input process for this Plan, community members suggested potential improvements for the Greater Neighborhood. The pages that follow divide the community's vision for the Greater Neighborhood into the public and private realms.

This information should inform comprehensive plan updates as well as future street improvements, investment, and other work in the Greater Harris Park Neighborhood.

*Map #12: The Greater Harris Park Neighborhood*





*Incorporate more parks and community amenity spaces.*

## Public Realm

Many issues for the Greater Neighborhood pertain to the public realm. They revolve around a lack of sidewalks, bike lanes, and streetscape improvements, which makes it difficult and unsafe to get around the area. Public safety concerns are also a top issue focused primarily on traffic and lighting. Solutions suggested by the community range from those that are particular to a specific location to those that apply to the entire Greater Neighborhood.



*Add bicycle lanes and paths throughout the Greater Neighborhood, and indicate where lanes are to be shared.*



*Complete the sidewalk network and enhance ADA accessibility.*

## Community Vision

- Complete the sidewalk network and enhance ADA accessibility.
- Expand the Lowell Blvd streetscape features south from 73rd Ave.
- Incorporate streetscape improvements to Bradburn Blvd, 76th Ave, 78th Ave, and other important streets.
- Consider incorporating traffic calming measures at unsafe intersections.
- Install a left turn lane from southbound Bradburn Blvd to eastbound 72nd Ave.
- Add bicycle lanes and paths throughout the Greater Neighborhood.
- Consider replacing existing signs with those that have larger print and utilize lights to make them easier to read at night.
- Add street lights where needed.
- Incorporate more community amenity spaces.
- Increase security at school drop off and pick up.
- Explore means of improving public safety and address speeding, especially along 72nd Ave, through physical improvements and police enforcement.
- Provide a physical connection to the Bowles House from the Core Area.



## Private Realm

The community noted some issues that focus on the private realm in the Greater Neighborhood. Participants noted a lack of community services including:

- a homeless shelter and services for the homeless
- a grocery store
- an arts school
- a cultural center
- a community/recreation center
- a community services center
- community gardens

Harris Park and the immediate vicinity currently possess many of these services; therefore, additional public outreach and education may be warranted. Enhancements to these services may require public/private partnerships and coordination with not-for-profit institutions. In addition, some of these services may, by necessity, need to be located nearby but outside the Harris Park Area.

The lack of affordable programs for adolescents and teens, as well as the lack of cultural programming including art events and festivals were also noted as concerns. Solutions suggested by the community to address these private realm issues range from specific actions to further study of certain topics.

One of the defining features of the Harris Park Area is the presence of a variety of unique small businesses. Accommodating and encouraging additional small businesses to locate in the Harris Park Area is desired. Exploring a range of incentives, both from the city and from state or national funding sources, is one step toward easing hurdles for new businesses. Partnering with the Chamber of Commerce and other organizations is also key to accomplishing this goal.

Finally, community members noted the need for improved property maintenance throughout the Harris Park Area, for all types of properties including residential and commercial. While no specific solutions were noted to address this issue, enforcing property maintenance will likely need to be addressed by the city.



*Create residential design guidelines to encourage compatible infill development.*



*Encourage primarily residential development in the Greater Neighborhood that is compatible with the existing residential character.*



*Investigate the practicality of allowing Accessory Dwelling Units (ADUs).*



*Encourage primarily residential development in the Greater Neighborhood that is compatible with the existing residential character.*

## Community Vision

- Encourage primarily residential development in the Greater Neighborhood that is compatible with the existing residential character.
- Create residential design guidelines to encourage compatible infill development.
- Encourage a range of housing options that will be compatible.
- Investigate the practicality of allowing Accessory Dwelling Units (ADUs).
- Explore a program(s) that provides financial incentives to foster economic diversity.
- Explore the use of monetary incentives to encourage homeowners to fix up the street fronts of residences.
- Work with homeowners to determine solutions to encourage proactive property maintenance.
- Encourage well-organized events to serve the neighborhood, such as food truck festival, community clean-up event, and farmer's market.
- Explore partnering with existing St. Martha's Episcopal Church to host community gatherings.
- Research alternatives to a cemetery in the Greater Neighborhood, as space is limited.
- Analyze the feasibility of adding a grocery store to the area.
- Identify potential historic resources and develop strategies to keep them part of the Greater Neighborhood.
- Examine zoning regulations to prevent inappropriate building types in the neighborhood.
- Promote well-maintained landscaping throughout the area.



# Chapter 5

## Design Principles

---

The design guidelines for Traditional Mixed Use Neighborhood Developments (TMUND) currently regulate the design of both the public realm and private development in the Harris Park Core. Guidelines dictate design requirements for neighborhoods characterized by a mix of uses, a walkable and interconnected urban environment, and civic spaces. However, the TMUND design guidelines were established for and have been principally applied to undeveloped "greenfield" areas of the City. As such, they are less applicable to long-established communities such as Harris Park.

These design principles are tailored to Harris Park and are articulated to ensure that projects are compatible with the specific character areas and the neighborhood goals outlined in this vision plan. These design principles provide additional guidance in the application of the current TMUND design guidelines and will inform the application of any future design standards for the Harris Park core.

While not regulatory in nature, these design principles provide additional site and project design guidance for reference during project review. City staff may exercise latitude in the interpretation and application of the design principles, provided that a project meets their general intent and the vision for the relevant character area. Every site is unique, and creative approaches to new development are encouraged.

# Sample Design Principle Format

The design principles format is consistent throughout this chapter and is outlined below using portions of the "Building Placement" topic as an example.

<p><b>Design Topic</b> →</p> <p>Describes the topic area</p> <p><b>Intent Statement</b> →</p> <p>Explains the desired outcome and provides a basis for the subsequent principles. The intent statement is a key component for each design topic and may be met in ways not specifically stated in the design principles. If no principle addresses a specific issue, the intent statement will be used to determine appropriateness of a design element. References to sections of the Citywide design guidelines within the Code appear in parentheses.</p> <p><b>Design Principle</b> →</p> <p>Describes the design outcome. Principles are sequentially numbered.</p> <p><b>Additional Information</b> →</p> <p>Provides appropriate and inappropriate strategies for meeting the intent.</p> <p><b>Character Area Specific Statement</b> →</p> <p>All design principles are applicable to all Character Areas. Call-outs identify when a design principle is especially important for a specific Character Area.</p> <p><b>Graphics</b> →</p> <p>Clarify the intent of the guideline by illustrating appropriate and inappropriate design solutions. Checkmarks and X's are located in the upper-right corner of each image to indicate whether it is appropriate or inappropriate for Harris Park.</p>	<p><b>Building Placement</b></p> <p>Building placement addresses the distance between a building and the street or the sidewalk edge. Buildings should be placed to establish a street wall in the contexts and Character Areas where a street wall is an important feature. In other Character Areas, building placement may be more varied. (See Westminster Unified Development Code.)</p> <p><b>SD.9. Orient the primary building entry to the street.</b></p> <ul style="list-style-type: none"> <li>• Highlight the primary entry by considering the use of awnings, canopies, or a recessed entry.             <ul style="list-style-type: none"> <li>» This is especially important in Character Areas 3, 5, 6, and 8.</li> </ul> </li> <li>• Orient the entrance to a building towards the street. Setting it back farther into a site where a front yard or landscaped area is planned may be appropriate.             <ul style="list-style-type: none"> <li>» This is especially important in Character Areas 1, 2, 3, 4, 6, and 8.</li> </ul> </li> </ul>
---	--



Locate a building to fit within the general range of setbacks within the Character Area.



Orient the primary building entry to the street.

### Image Key

- Appropriate
- Inappropriate
- Potentially appropriate

(Ratings are based on community input.)



## Streetscape

Streetscape elements typically occur in the public realm but in some cases also may be on private property. Streetscape elements, which include street trees, sidewalks, benches, planters, trash cans, and public art, should be compatible with the area in which they are located. They should also be functional.

Streetscape improvements should increase one's ability to perceive the traditional character of the area, improve pedestrian circulation, and visually link properties.

### S.1. Design streetscape elements to reflect the Character Area where they are located.

- Incorporate street trees on a traditional street.
  - » Especially important in Character Areas 3, 5, 7, and 8.
- Incorporate a traditional front yard in predominately residential areas, even when the building is adaptively reused to a non-residential use.
  - » Especially important in Character Areas 1, 2, and 4.
- Design a streetscape palette that continues along 73rd Ave, 72nd Ave, Lowell Blvd, and Bradburn Blvd.

- Incorporate public art into street furnishings.
  - » Especially important in Character Areas 3,5,7, and 8.
- Ensure street furnishings are functional in design and constructed of high-quality materials.
- Promote a unified street light design.

### S.2. Cluster street furnishings where room allows.

- Cluster street furnishings in a public space to create a spot to rest and congregate.
- Provide shade where appropriate.

### S.3. Maintain a clear, continuous walkway along the front of a building.

- Widen sidewalks in the core when feasible.
- Locate street furniture, outdoor tables, and other outdoor accessories so they will not block the pedestrian route.
- Maintain or create ADA-accessible pathways.



*Incorporate street trees on a traditional street.*



*Locate street furniture, outdoor tables, and other accessories so they will not block the pedestrian route.*



Consider incorporating public art into gateway features.



Consider incorporating public art in street furnishings.

#### **S.4. Plant street trees where feasible.**

- Use a variety of species for street trees to help convey the diversity and irregularity of the traditional character of the area. (See Westminster Unified Development Code.)
- Consider the existing street tree pattern in the context of the Character Area before planting new street trees.

#### **S.5. Incorporate planters into the streetscape.**

- Where sidewalks are narrow and street trees are not feasible, provide planters to enhance the pedestrian experience and provide a buffer from traffic.
- Incorporate planters along commercial corridors and inside building setbacks.

#### **S.6 Delineate areas where streetscape improvements and amenities will be provided and maintained by the City and areas that are the responsibility of the adjacent property owner.**

##### **Public Art**

Public art should enhance the pedestrian experience throughout the area. It should be installed in courtyards, plazas, and public spaces where feasible. Art can also be incorporated into street furnishings, walkways, and at building entrances. (See Westminster Unified Development Code.)

#### **S.7. The use of public art is encouraged. Consider incorporating public art in the following locations:**

- Plaza
- Courtyards
- Walkways through properties
- Street furnishings
- Building design
- Gateway features
- Utility boxes



## Site Design

These design principles address the manner in which a building is positioned on its site, as well as the ways in which landscape elements are used. They also provide guidance for the organization of uses on a site, including outdoor spaces, building location, parking, pedestrian and automobile circulation, and landscape design.

The objective of these principles is to create a vibrant area that is appealing to pedestrians and supports a mix of retail, dining, and entertainment, as well as offices, residential, and cultural activities.

### Views

Views from the public right of way to natural features and landmarks should be identified and maintained. Significant views may occur from City parks, properties, and rights of way. See Map #11: Connectivity Framework for key views. (See Westminster Unified Development Code.)

#### **SD.1. Enhance views to scenic natural features and landmarks.**

- Locate and design a building to maintain key views from the public right of way.
- Locate buildings to frame a view as it is observed from public rights-of-way. Avoid completely blocking

a view from a public right-of-way with a large building mass.

- Where a site contains a view to natural features and landmarks, design a new building or an addition to take advantage of the view.

### Historic and Cultural Resources

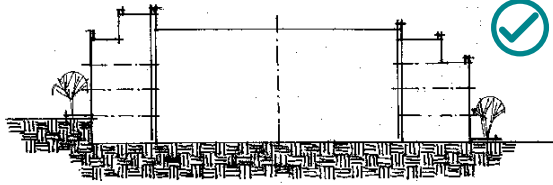
The City's cultural and historic resources are critical to the Harris Park Area's unique sense of place. These resources will contribute to attracting new development to the area, but care should be taken to preserve the existing resources when new development is proposed. A map of historic resources is available at the City offices.

#### **SD.2. New development should be designed to respect and complement cultural and historic resources.**

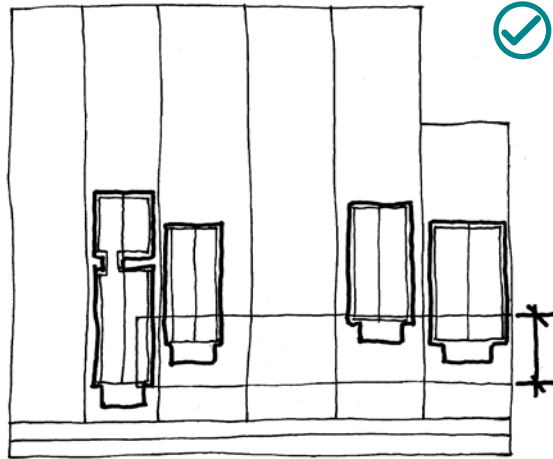
- Locate a building within the established front setback created by neighboring historic buildings.
- Design a new building to respond to the general mass and scale of a neighboring historic structure(s).
- Step down the height of a building towards a historic structure to respect the height, form, and scale of the historic building.
- Incorporate design features to distinguish the new building from the historic structure.
- Avoid replicating a historic structure or design.



*The buildings above, the Grange and 3915 W. 73rd Ave, are two of the many historic resources in Harris Park. New development should be designed to respect and complement cultural and historic resources, such as these buildings.*



*Vary the height of a building to respond to a sloping site.*



*Locate a building to fit within the general range of setbacks within the Character Area.*

## Topography

Site work should be planned to protect the variation and character of the existing topography. (See Westminster Unified Development Code.)

### **SD.3. Minimize the visual impacts of cut and fill grading on a site.**

- If cut and fill grading is necessary, regrade the site to be stable and reflect the "natural" slope, when feasible.

### **SD.4. Step a building foundation to follow the existing topography.**

- Step the foundation of a building to follow site contours, when feasible.
- If stepping the foundation is not possible, disguise the cut with the placement of the building and provide a landscape buffer at the top of the cut.
- Vary the height of a building to respond to a sloping site.

### **SD.5. Work with existing site topography to prevent off-site drainage.**

- Direct water to a common drainage path to avoid drainage on adjacent properties.
- Where possible, collect rainwater to reuse on site.

## Building Placement

Building placement addresses the distance between a building and the street or the sidewalk edge. Buildings should be placed to establish a street wall in the contexts and Character Areas where a street wall is important. In other Character Areas, building placement may be more varied. This variation in setbacks is often part of the character of an area. (See Westminster Unified Development Code.)

### **SD.6. Locate a building to fit within the general range of setbacks within the Character Area.**

- Especially important in Character Area(s) 2, 3, and 4
- In Character Area 5, buildings should be pulled to the street along Lowell to establish a street wall south of 73rd Ave.

### **SD.7. Locate a building outside of the established critical tree root zone of healthy mature trees.**

### **SD.8. Orient the primary building entry to the street.**

- Highlight the primary entrance through the use of awnings, canopies, recessed entries, and other devices.
  - » Especially important in Character Areas 3, 5, 6, and 8



- Orient a building entrance towards the street. Locate the entrance near the public realm when possible. However, there may be some cases where setting it back farther into a site is appropriate.
  - » Especially important in Character Areas 1, 2, 3, 4, 6, and 8

**SD.9. In a large development with multiple buildings, cluster buildings to create defined, outdoor spaces.**

**SD.10. Provide a building anchor at the corner of a major intersection.**

- Define the corner by locating the building at the corner.
- Where a building is not located at the corner, enhance the corner with a pedestrian-friendly entrance plaza. Incorporate human-scaled design features such as benches and planters in the plaza.
  - » Especially important in Character Areas 3, 5, 7, and 9

**SD.11. When locating a new building adjacent to a historic resource, provide ample space to allow maintenance on the historic building and respect the historic character of the existing resource.**

**SD.12. Organize the edges of a site to provide visual interest to pedestrians.**

- Incorporate display windows or other architectural features at the pedestrian level.
- Provide landscape features along the walkway edge.
- Locate a building at the walkway edge if it is a goal for the specific character area.
  - » Especially important in Character Areas 3 and 5



*Orient the primary building entry to the street.*





*Develop private space as a focal point for the site. Entrances to multiple businesses are oriented toward the private space above, which is also used to host pedestrian activity.*



*Consider incorporating a private outdoor space, such as the patio seen above, to enhance the new use.*



*Consider incorporating private outdoor space to enhance new uses. This patio provides an opportunity for café patrons to sit outside.*



*Develop private space as a focal point for the site.*

## Private Outdoor Space

Outdoor private space should be provided that can be flexibly utilized and programmed. This space should enhance the site as a place for pedestrians. It should be coordinated with that of adjoining properties and pedestrian connections. (See Westminster Unified Development Code)

### **SD.13. Consider incorporating private outdoor space to enhance new uses.**

- The space may be composed of a landscape yard area, courtyard, and/or patio.

### **SD.14. Develop private outdoor space as a focal point for the site.**

- Use the space to connect the entrances of multiple buildings on a site.
- Orient an outdoor space to encourage pedestrian activities.
- Design a private outdoor space to create visual interest and to provide views of activities, cultural resources, and/or natural features.



## Pedestrian Connections

Pedestrians should have safe, convenient access to destinations throughout the Harris Park Area. A pedestrian circulation system that fits with the character of the area should be provided. (See Westminster Unified Development Code.)

### **SD.15. Design a project to include an integrated circulation system that links the property with adjoining uses.**

- Provide direct and safe pedestrian access from a public sidewalk to the individual uses and spaces on a property.
- Appropriate pedestrian connections include sidewalks, internal walkways, courtyards, and plazas.

### **SD.16. Position walkways to encourage pedestrian use.**

- Provide pedestrian facilities that are adequately sized for their projected usage of the project and fully accessible to those with mobility needs.
- Locate a walkway so that key destination points, such as building entries, are clearly identifiable.
- Locate paths in areas that are visible from public streets.
- Define a walkway with landscaping, site furniture, and pedestrian-scaled lighting.

## Site Lighting

The character and level of lighting that is used on a building and site is of special concern. New lighting should consider the historic lighting palette—namely the modest, focused use of lights that highlight key building features including entrances, signs, and first-floor details. Lighting on the site should also be designed to be in scale with those found in the Core. (See Westminster Unified Development Code.)

### **SD.17. Use lighting for the following:**

- To accent building entrances.
- To light signs.
- To provide a safe and secure environment.

### **SD.18. Design pathway lighting to be pedestrian-friendly.**

- Ensure lighting is scaled to the pedestrian.
- Deploy pathway lighting to enhance public safety.
- Illuminate areas near building entrances.

### **SD.19. Direct exterior lighting down and conceal the light source.**

- Prevent glare by using shielded and focused light sources.
- Where "uplighting" is used, direct the lighting at the building and away from the sky.

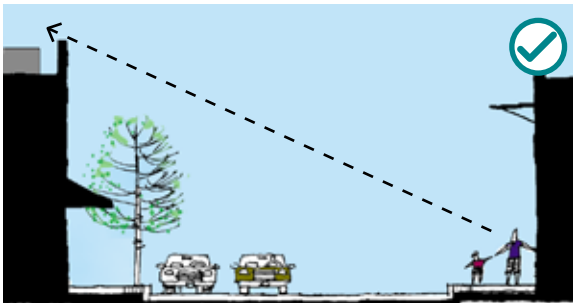


*Design a project to include an integrated circulation system that links the property with adjoining uses.*

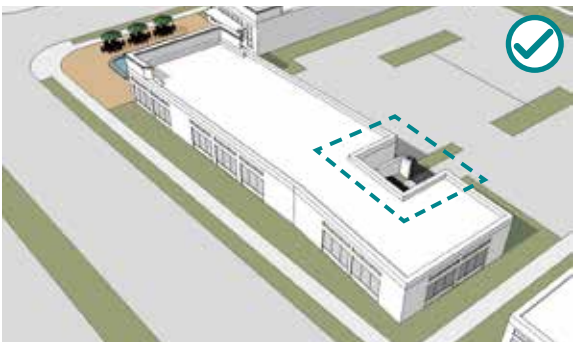




Minimize the visual impact of mechanical equipment from the public right-of-way using screen walls or other screening methods.



Use low-profile mechanical units on rooftops that are not visible from public streets.



Orient a service entrance and other similar uses away from the street.

- Shield lighting associated with service areas, parking lots, and parking structures.
- Consider "dark sky" compliance.

**SD.20. Utilize energy-efficient light fixtures, such as LEDs, when feasible.**

**Utilities and Service Areas**

Utilities and service areas shall be visually unobtrusive and integrated with the design of the building and the site. (See Westminster Unified Development Code.)

**SD.21. Design service entrances, waste disposal areas, and other similar uses to reduce negative impacts on the street.**

- Orient service areas away from streets.
- Screen service areas from view.
- Ensure that waste disposal areas are adequately sized to accommodate recycling and composting.

**SD.22. Minimize the visual impact of mechanical equipment from the public right of way.**

- Screen equipment from view by considering the following methods:
  - » building parapets
  - » landscape features
  - » architectural features
  - » painting the equipment to match the roof. This may be a more appropriate solution than a large screened enclosure.
- Locate rooftop mechanical units away from rooftop edges to reduce visibility from public streets and utilize low-profile units.
- Locate satellite dishes out of public view and in compliance with other regulations.



## Building Design

These design principles encourage development that conveys a sense of local identity and reflects the evolving character of the area while respecting its history and heritage. Buildings should not replicate historic designs but should respect the architectural styles present in each Character Area while adding unique expressions to this eclectic neighborhood.

### Mass and Scale

A variety of building sizes are present throughout Harris Park with most tending to be smaller in size. While larger format buildings may be appropriate, their massing should reflect the small-scaled architectural massing of traditional development. (See Westminster Unified Development Code.)

#### **BD.1. Design a building that is of an appropriate scale to its surrounding context.**

- Consider factors such as the building height, width, roof form, and floor-to-floor dimensions and how they relate to the surrounding context.
  - » This is especially important in Character Areas with an established context that is to be continued based on community vision. This includes Character Areas 1, 2, 3, 4, and 8.

#### **BD.2. Divide a larger building into “modules” or bays that are similar in scale to traditional buildings.**

#### **BD.3. Incorporate a variety of façade components, such as windows, doors, and setbacks, to help establish a traditional building scale.**

- Repeat façade components, including windows, columns, ornamental trim, and architectural features to produce rhythms and patterns.
- Use windows and doors that are proportional in scale to those seen in traditional architecture.
- Use horizontal elements such as porches, balconies, and horizontal coursing to break up the vertical mass of a wall.

#### **BD.4. Articulate a building to express human scale, reduce perceived mass, and create visual interest. Options include:**

- Variation in building heights
- Stepping back a larger building mass from the street to reduce looming effects
- Wall plane offsets such as notches or varied façade setbacks
- Wall projects such as columns
- Varied roof forms
- Awnings, canopies, or other features that help define the ground floor of the building



*Step back a larger building mass from the street to reduce looming effects. Here, the third story is stepped back.*



*Design a building that is appropriately scaled to its context.*



*Design floor-to-floor heights to appear to be similar to those seen in existing buildings.*



*Consider the Character Area context and community vision when determining the appropriate roof form. Gable roofs are commonly featured.*



*Consider context and community vision when determining the appropriate building height.*

### **Building Height**

A building should appear to be similar in height to buildings in the Character Area. The visual impacts of taller portions that exceed traditional heights should be minimized. (See Westminster Unified Development Code.)

#### **BD.5. Consider the Character Area context and community vision when determining the appropriate height for a new building.**

In general, use the following guidance:

- Character Areas 1, 2, and 3: One and two-story buildings
- Character Areas 5 and 8: Two and three-story buildings
- Character Area 5: Three-story buildings
- Character Area 6: Two, three, and four-story buildings
- Character Area 7: One, two, and three-story buildings
- Character Area 9: Two and three-story buildings, as well as taller one-story buildings

#### **BD.6. Design floor-to-floor heights to appear to be similar to those seen in existing buildings.**

- Openings, such as windows and doors, should appear similar in height to those seen traditionally.
- First floors should be taller than upper floors.

### **Building and Roof Form**

Traditional building and roof forms stand as a major unifying element in Harris Park. Most buildings are simple rectangular solids with gable or hip roofs, and an occasional flat roof. This feature is characteristic of the neighborhood and should be present in new construction. (See Westminster Unified Development Code.)

#### **BD.7. Design a primary building form to be a simple rectangle to relate to the existing development in the area.**

- Exceptions may be provided and can be discussed with staff.

#### **BD.8. Consider the Character Area context and community vision when determining the appropriate roof form for a new building.**

In general, use the following guidance:

- Character Areas 1 and 2: gable roof
- Character Areas 3 and 4: gable roof for residential development; gable or flat roof for commercial and mixed use development
- Character Area 9: gable roof for residential buildings
- Character Areas 5, 6, 7, and 8: the community did not specify a roof form



## Building Materials

Traditional building materials in Harris Park include wood and masonry deployed in a variety of ways. This selection of materials should continue though new materials may also be considered if they relate to those traditionally used. (See Westminster Unified Development Code.)

### **BD.9. Use materials similar to those used traditionally.**

- Traditional building materials reduce the perceived scale of a building with appropriate detailing and should continue to be used in the area.

### **BD.10. Consider the Character Area context and community vision when determining the appropriate materials for a new building.**

In general, use the following guidance:

- Character Area 1: a range of materials, including wood
- Character Area 2: wood as a primary material
- Character Areas 3 and 4: a range of materials, including wood and brick
- Character Area 5: brick as a primary material
- Character Area 6: brick as a primary material, a variety of accent materials

- Character Area 7: a variety of materials, although incorporating some masonry is important
- Character Area 8: brick and potentially some other masonry materials as the primary material
- Character Area 9: A variety of materials including wood, brick and corrugated metal in continuity with the surrounding context

### **BD.11. New materials may be considered for proposed development.**

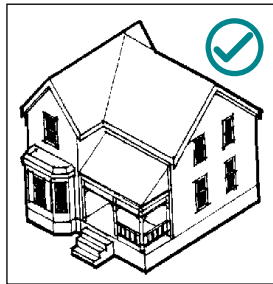
- New materials should relate to those traditionally used.
- Articulate large expanses of materials to express a human scale and to avoid a wall that looks "featureless."
- Incorporate materials that exhibit depth (especially around windows and doors) and detail.



*Use materials similar to those used traditionally. Brick is appropriate as a primary material in many of the Character Areas.*



Use a ratio of solid-to-void that is similar to that found on traditional one- and two-story buildings in the Core.



For a new residential building, maintain punched window openings and the existing solid-to-void ratio that exists on neighboring residential buildings. In the diagrams above, the building on the left maintains the solid-to-void ratio seen in many existing single-family buildings in Harris Park. The building on the right exhibits a much higher percentage of glass and is inappropriate.

### Solid-to-Void

Within a traditional building context, a sense of visual continuity is provided by a building's solid to void ratio (the percentage of glass to solid wall surface on a building face). This should be maintained with new development. (See Westminster Unified Development Code.)

### BD.12. Use a ratio of solid-to-void (wall-to-window) that is similar to that found on traditional one- and two-story buildings in the Core.

- For a new commercial building, the following composition is appropriate:
  - » For one-story buildings, a storefront system, punched window openings or a combination of the two is appropriate.
  - » For a two-story building, a storefront at the street level with punched window openings on the second floor. The lower floors are more transparent.
- For a new residential building, maintain punched window openings and the existing solid-to-void ratio that exists on neighboring residential buildings.
  - » Especially important in Character Areas 1, 2, and 3.



## Parking

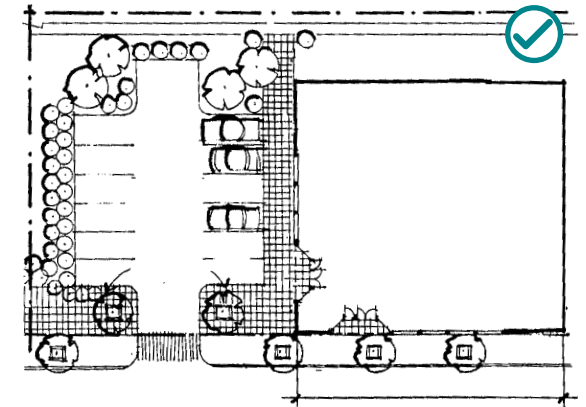
New parking areas should be designed to be attractive and provide a pedestrian-friendly edge. Incorporate landscaping within and at the edges of surface lots, and locate these areas away from public view.

### P.1. Locate parking access points to minimize conflicts with pedestrian traffic.

- Locate curb cuts away from intersections to minimize conflicts with pedestrian and traffic movement.
- Locate a drive to allow shared use.



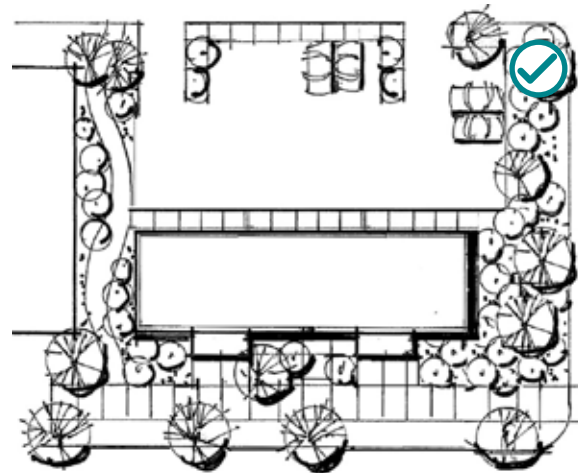
*Incorporate a strong visual buffer where a parking lot abuts a public sidewalk.*



*Locate curb cuts away from intersections to minimize conflicts with pedestrian and traffic movement.*

### P.2. Design a surface parking lot to be visually subordinate to the street.

- Locate a surface lot behind a building.
  - » Especially important in Character Areas 1, 2, 3, 4, and 5
- Incorporate islands in a large surface lot.
- Incorporate clearly delineated pedestrian connections in a large surface parking lot.



*Design a surface parking lot to be visually subordinate to the street.*



*Incorporate delineated pedestrian connections in a large surface parking lot.*

### P.3. Incorporate a strong visual buffer where a parking lot abuts a public sidewalk.

- Locate a landscaped area adjacent to the sidewalk to buffer the public right of way from a surface parking lot.



*Locate a landscaped area adjacent to the sidewalk to buffer the public right of way from a surface parking lot.*





# Chapter 6

## Implementation

---

This chapter provides an implementation plan for the recommendations contained in the previous chapters. While each of the recommendations in the previous chapters are not specifically stated, they are reflected in the Goals, Objectives, and Actions in this implementation section. The recommendations throughout the Plan will be consulted as the implementation stage of the project occurs.

The implementation section is organized into Goals, Objectives, and Actions. The goals express the community's vision. Each goal contains a series of objectives to help accomplish the goal, and each objective contains a series of action items to provide specific steps to take to accomplish the objective.

Not all actions, objectives, and goals can be accomplished immediately, and some may need to be completed first before beginning a separate action. With this in mind, as the implementation stage begins, staff will take a close look at the appropriate timing for each of the recommendations. Staff will also work

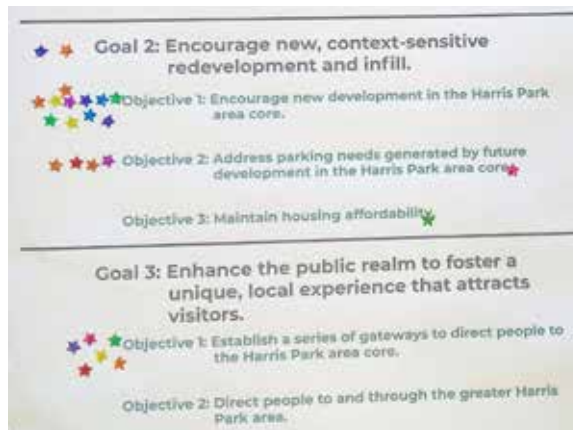
with the appropriate groups, such as non-profits, community organizations, and private groups, to accomplish the recommendations stated within this Plan. While City staff will administer the implementation program, other community organizations, non-profits, and private groups will be heavily involved in the realization of this plan vision.

During the final workshop, community members had an opportunity to vote for the Goals and Objectives they deemed to be a priority as the plan moves forward into implementation. The votes for each objective were added together to provide a total for each Goal. Votes that were not assigned to a specific Objective are also included in this total. These totals are shown in parentheses after the Goals text on the following pages. These votes will help staff prioritize the Actions that are tackled first during plan implementation.

*Note: The actions listed in this chapter represent the culmination of the community's input into steps needed to realize their vision. While all actions will be explored, fiscal realities, physical constraints, and alignment with other city planning efforts and adopted City Goals, among other things, will impact the feasibility of implementing these actions. In addition, some properties in the study area may be subject to external (non-City) regulation that may prevent full realization of the community vision. It also is important to note that implementation will occur in phases, over several years.*



Workshop participants studied the draft Implementation strategy, and provided their input.



In a public workshop participants used stickers to prioritize the proposed Goals and Objectives

## Goal 1: Preserve and enhance the unique character of the Harris Park Core and Greater Harris Park Neighborhood. (32)

### Objective 1: Protect historic assets.

Actions:

- A. Identify historic resources through survey work.
- B. Explore options and incentives for preserving historic buildings.
- C. Create building design standards that respect historic buildings while complying with other applicable City standards and allowing for flexibility for redevelopment.
- D. Support retention of small businesses, which are part of neighborhood character.

### Objective 2: Preserve important viewsheds.

Actions:

- A. Protect important viewsheds as identified on the connectivity framework map.
- B. Encourage new development to take advantage of viewsheds.

### Objective 3: Encourage the adaptive reuse of existing buildings.

Actions:

- A. Develop an adaptive reuse program to help commercial property owners repurpose their buildings.
- B. Review existing building regulations to identify ways to encourage the adaptive reuse of buildings.

### Objective 4: Protect the residential character of Harris Park while allowing for appropriate infill.

Actions:

- A. Create residential design standards that encourage compatible infill development.
- B. Investigate the practicality of Accessory Dwelling Units (ADUs) in the Greater Harris Park Neighborhood.
- C. Address barriers discouraging home improvement to assist residents in staying in their homes and aging in place.
- D. Work with property owners to improve property maintenance.

## Goal 2: Encourage new, context-sensitive redevelopment and infill. (44)

### Objective 1: Encourage new development in the Harris Park Core.

Actions:

- A. Redevelop under-utilized and vacant properties in ways that enhance the appearance of the area.
- B. Assure that zoning allows for mixed use, context-sensitive development.
- C. Encourage retail and restaurant development along 73rd Ave and Lowell Blvd.
- D. Incentivize development that anchors the corners of 72nd and 73rd Aves at Lowell Blvd and Bradburn Ave.



- E. Promote environmentally-sustainable features and designs of new development.

*Objective 2: Address parking needs generated by future development and adaptive reuse of existing buildings in the Harris Park Core.*

Actions:

- A. Explore means of utilizing existing on-street and off-street parking facilities to address future parking.
- B. Increase access to and utilization of alternative transportation modes to reduce vehicular traffic and improve public health.

*Objective 3: Encourage a wide range of housing types and target markets throughout the area.*

Actions:

- A. Implement strategies and programs identified in the Affordable and Workforce Housing Strategic Plan and Community Development Block Grant (CDBG) Consolidated Plan to assist residents with staying in their homes and aging in place.
- B. Support the development of new affordable housing that meets the needs of the community as identified through the Housing Needs Assessment and other research data.

### **Goal 3: Enhance the public realm to foster a unique, local experience that attracts visitors. (17)**

*Objective 1: Create a detailed implementation program for public improvements.*

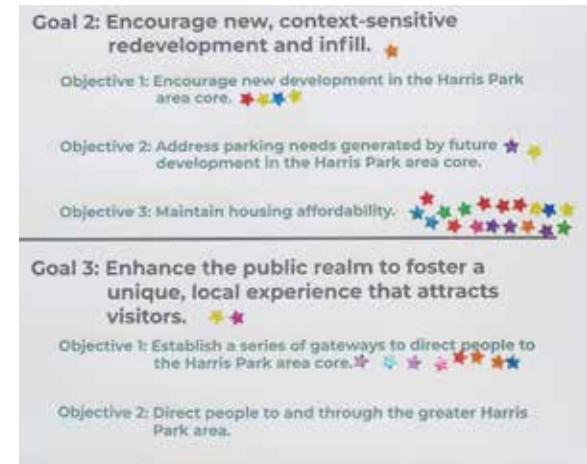
Actions:

- A. Perform a detailed evaluation of this list of action items, taking into account fiscal realities, physical constraints, conformance with other related city planning efforts, and alignment with adopted City Goals.
- B. Include signage with universal symbols in an improved wayfinding system in this evaluation.
- C. Explore collaborative efforts with other agencies, such as the railroad, to enhance their properties.

*Objective 2: Enhance the existing streetscape and park spaces.*

Actions:

- A. Extend existing streetscape elements to corridors identified on the Connectivity Framework map.
- B. Evaluate the potential of transforming both sides of the 72nd Ave corridor into a complete street that serves as Harris Park's "front door."
- C. Establish a streetscape maintenance plan to ensure continued care of existing and future infrastructure. Identify the roles and responsibilities of the City and adjacent property owners.



Priorities for implementation from a public workshop.

Community Vision for the Harris Park Area: Implementation Matrix	
Action	
<b>Goal 1: Preserve the unique character of the Harris Park and Greater Harris Park areas.</b>	
<b>Objective 1: Protect historic assets.</b>	<ul style="list-style-type: none"> <li>A. Identify historic resources through survey work.</li> <li>B. Explore options and incentives for preserving historic buildings.</li> <li>C. Create building design standards that respect historic buildings while complying with other applicable City standards and allowing for flexibility for redevelopment.</li> </ul>
<b>Objective 2: Preserve important viewsheds.</b>	<ul style="list-style-type: none"> <li>A. Protect important viewsheds as identified on the connectivity framework map.</li> <li>B. Encourage new development to take advantage of viewsheds.</li> </ul>
<b>Objective 3: Encourage the adaptive reuse of existing buildings.</b>	<ul style="list-style-type: none"> <li>A. Develop an adaptive reuse program to help commercial property owners repurpose their buildings.</li> <li>B. Identify and resolve issues related to adaptive reuse of residential buildings.</li> </ul>
<b>Objective 4: Protect the residential character of the Harris Park area while allowing for appropriate infill.</b>	<ul style="list-style-type: none"> <li>A. Create residential design standards that encourage compatible infill development.</li> <li>B. Investigate the practicality of Accessory Dwelling Units (ADUs).</li> <li>C. Address barriers facing homeowners that want to improve and expand their existing homes.</li> <li>D. Work with homeowners to improve property maintenance.</li> </ul>

Workshop participants provided comments on the draft Implementation Strategy in the form of sticky notes.

- D. Incorporate features along key routes to important destinations to ensure a safe and pleasant experience for pedestrians and cyclists.
- E. Consider environmentally-sustainable design practices in new public
- F. Consider acquiring additional properties to expand existing parks and open space along with trail connectivity as opportunities arise.
- G. Create a master plan for Fireman's Park. Consider multi-use space, programming, and park amenities.
- H. Expand Westminster Garden and improve pedestrian, bicycle, and vehicular access. Consider additional recreational amenities and programming as appropriate.
- I. Support the activation of the 73rd Ave Sculpture Park
- J. Maintain and bolster the presence of art in the core area to be experienced year-round.

***Objective 3: Establish a series of gateways to direct people to the Harris Park Core.***

Actions:

- A. Highlight primary gateway location throughout the core.
- B. Incorporate features to highlight secondary gateways.

**Goal 4: Improve connectivity and safety for transportation networks. (13)**

***Objective 1: Enhance vehicular traffic safety.***

Actions:

- A. Analyze key intersections to determine appropriate traffic flow and safety improvements.
- B. Consider the use of traffic calming measures, especially along 72nd Ave.

***Objective 2: Improve the local bicycle network.***

Actions:

- A. Connect bicycle infrastructure to the citywide bicycle network.
- B. Improve connections to the Highway 36 bikeway.
- C. Establish safe bicycle connections to Westminster Station.

***Objective 3: Enhance pedestrian facilities and walkability throughout the area.***

Actions:

- A. Improve conditions in the existing sidewalk pedestrian network and improve ADA accessibility.
- B. Improve the safety and prominence of pedestrian crossings.
- C. Establish a safe sidewalk network to connect pedestrians to nearby destinations, including the Westminster Station.



**Goal 5: Enhance opportunities for neighborhood communication, partnerships, and gathering. (19)**

*Objective 1: Enhance existing public spaces through programming and amenities.*

Actions:

- A. Support the activation of the 73rd Ave Sculpture Park.
- B. Maintain and bolster the presence of public art in the core area.
- C. Encourage development of new facilities such as a theater or fine arts center.

*Objective 2: Establish new opportunities for community interaction.*

Actions:

- A. Promote existing community services and explore the addition of new services to meet community needs.
- B. Encourage the incorporation of outdoor dining spaces into private development.

*Objective 3: Work with the community to program regular events throughout the area.*

Actions:

- A. Continue supporting neighborhood-run events throughout the year, such as Summer Fest.
- B. Explore hosting a farmer's market in the Harris Park Core.
- C. Work with local businesses and neighborhood organizations to expand the offering of events.

*Objective 4: Formalize residential and business groups to realize community goals.*

Actions:

- A. Formalize a neighborhood group to improve communication, coordinate events, and manage other community-led efforts.
- B. Formalize a business group to enhance communication and promote local business opportunities.
- C. Explore capacity building efforts for existing businesses and property owners.
- D. Explore partnerships with regional organizations and businesses to address issues associated with homelessness. Consider existing facilities and institutions as part of this effort.

*Objective 5: Enhance events and ongoing marketing of Harris Park.*

